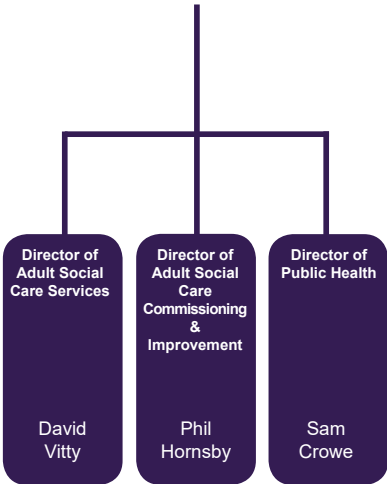


**Corporate Director of Adult Social Care**  
Jan Thurgood



- Director of Adult Social Care Services:**
- Information, advice and early intervention
  - Response and triage to contacts and referrals
  - Assessment and care management services
  - Adult safeguarding
  - Statutory mental health and mental capacity work
  - Council run direct care and support services
  - Integrated service delivery with health partners
  - Caldicott Guardian

- Director of Adult Social Care Commissioning & Improvement:**
- Needs assessments, market analysis and development
  - Commissioning plans
  - Procurement and contract monitoring
  - Brokerage service
  - Development and impact monitoring of strategic and business plans
  - Workforce planning for ASC and sector
  - Performance management and quality assurance
  - IT developments for ASC and health
  - Integrated commissioning and improvement with health

- Director of Public Health:**
- Statutory public health responsibilities
  - Improving health and wellbeing

**Corporate Director of Children's Services**  
Judith Ramsden

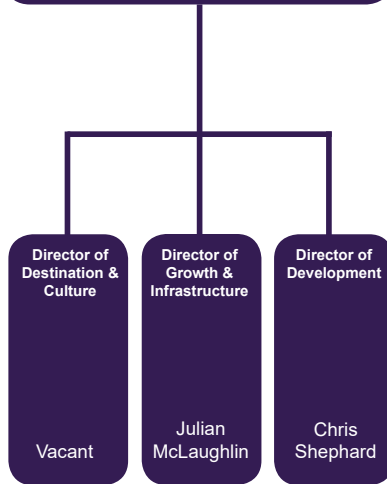


- Director of Children's Social Care Services:**
- Children in need and child protection services
  - Specialist family support services
  - Regional adoption agency
  - Fostering
  - Support for looked after children and care leavers
  - Children's residential and respite services
  - Multi-agency safeguarding hub
  - Safeguarding partnership
  - YOS
  - Asylum seeking services for children

- Director of Inclusion and Family Learning:**
- Early years
  - School standards partnership
  - 14 – 19 services
  - Specialist educational needs and disabilities
  - Integrated youth services
  - Early help
  - Virtual school
  - Fair access panel
  - Inclusion lead
  - School outreach and attendance

- Director of Quality & Commissioning:**
- Commissioning of Children's services (including performance and sufficiency)
  - Home to school transport
  - School place planning and school capital
  - School admissions
  - Children's Trust
  - Quality assurance (school partnership, social work and early help)
  - Partnerships (including LSCB)
  - Dedicated schools grant
  - Inspection planning
  - Systems and compliance
  - IRO, CP Chairs, LADO, ED Safeguarding
  - Complaints
  - ART

**Corporate Director of Regeneration & Economy**  
Bill Cotton



- Director of Destination and Culture:**
- Culture, arts, libraries and museums
  - Leisure provision and contract management
  - Destination management including seafront, tourism and events
  - Dorset adult learning service (pan Dorset)

- Director of Growth & Infrastructure:**
- Strategic planning
  - Highways network management
  - Engineering and coastal protection
  - Parking
  - Passenger transport
  - Building control
  - Planning services

- Director of Development:**
- Major capital projects
  - Economic development
  - Digital and smart cities
  - Town centre management
  - Estates and property
  - Town centre regeneration

**Corporate Director of Environment & Community**  
Kate Ryan

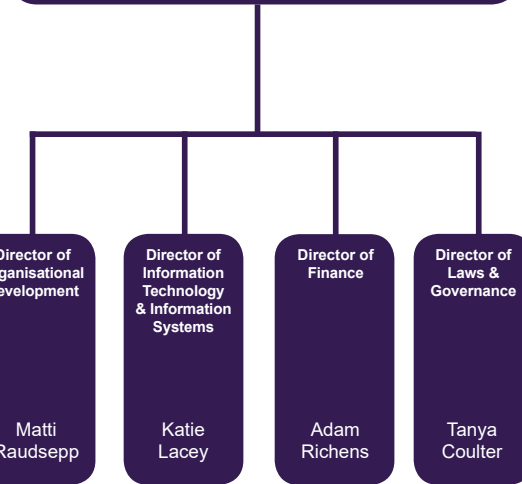


- Director of Housing:**
- Strategic housing development
  - Housing services
  - Homelessness
  - Housing asset management and construction
  - Commercial housing and construction companies
  - Facilities management

- Director of Environment:**
- Waste and cleaning
  - Fleet management
  - Green infrastructure development
  - Street scene services
  - Parks and open space management
  - Recreation and sports
  - Highway maintenance (delivery) and commercial service development
  - Bereavement services

- Director of Communities:**
- Regulatory services including environmental health, trading standards and licensing
  - Corporate health and safety
  - Community development and local regeneration
  - Targeted and community enforcements including private sector and housing
  - Community safety

**Corporate Director of Resources**  
Julian Osgathorpe



- Director of Organisational Development:**
- HR
  - Customer services
  - Communications and marketing
  - Insights, policy and performance
  - Major change and PMO

- Director of Information Technology & Information Systems:**
- ICT Infrastructure (inc web)
  - Applications and software
  - Network
  - Information security
  - Technical programme and project management

- Director of Finance:**
- Finance
  - Audit and assurance
  - Procurement
  - Emergency planning
  - Revenues and benefits

- Director of Law & Governance:**
- Legal services
  - Democratic services
  - Member services
  - Elections
  - Registrars
  - Local land charges
  - Information governance