



# Infrastructure Funding Statement 2019/20

---

Setting out the amount of contributions collected from developers through Community Infrastructure Levy and Planning Obligations and how the contributions were spent on delivery of infrastructure

23 December 2020

Version: Final

BCP Council Planning Research, GIS and Information Team

## Executive Summary

The Council collects contributions from development which are invested in infrastructure to support housing growth. This Statement sets out the contributions received from developers during 2019/20 and what items of infrastructure the contributions were spent on. The Council collects contributions from development through the Community infrastructure Levy (CIL) and from planning obligations.

BCP Council inherited contributions from Bournemouth, Christchurch and Poole Councils. In the first year of BCP Council's existence (2019/20) the Council received £9.4 million of development contributions and spent £5.2 million. At 1 April 2020 the Council held £24.8 million in unspent contributions, of which £24.1 million is allocated for spending from 1 April 2020 onwards. The headline figures for 2019/20 are:

	CIL	Planning Obligation	Total
Contributions requested in 2019/20	£8,872,409	£1,250,368	<b>£10,122,777</b>
Contributions received in 2019/20	£6,336,179	£3,068,284	<b>£9,404,463</b>
Contributions spent in 2019/20	£2,976,361	£2,231,976	<b>£5,208,337</b>
Unspent contributions at 1 April 2020	£8,512,181	£16,320,596	<b>£24,832,777</b>
Unspent contributions that are allocated at 1 April 2020	£7,845,942	£16,320,596	<b>£24,166,538</b>
Unspent contributions that are not allocated at 1 April 2020	£666,329	Nil	<b>£666,329</b>

Through the neighbourhood portion a total of £0.9 million CIL was spent by communities on local projects, with a further £2.4 million unspent. The parish/town councils were given £0.1 million to spend on priorities within each parish/town council area.



Hamworthy Paddling Pool – funded from the CIL Neighbourhood Portion

# Contents

<b>Executive Summary</b> .....	2
<b>Contents</b> .....	3
<b>1. Introduction</b> .....	4
<b>2. Contributions requested during 2019/20</b> .....	6
<b>3. Contributions received during 2019/20</b> .....	7
<b>4. Contributions spent during 2019/20</b> .....	8
<b>5. Contributions passed to Town and Parish Councils during 2019/20</b> .....	11
<b>6. Contributions set aside for unparished areas through the neighbourhood portion</b> .....	12
<b>7. Contributions held by the Council at 1 April 2020</b> .....	17
<b>8. Future spending priorities</b> .....	20

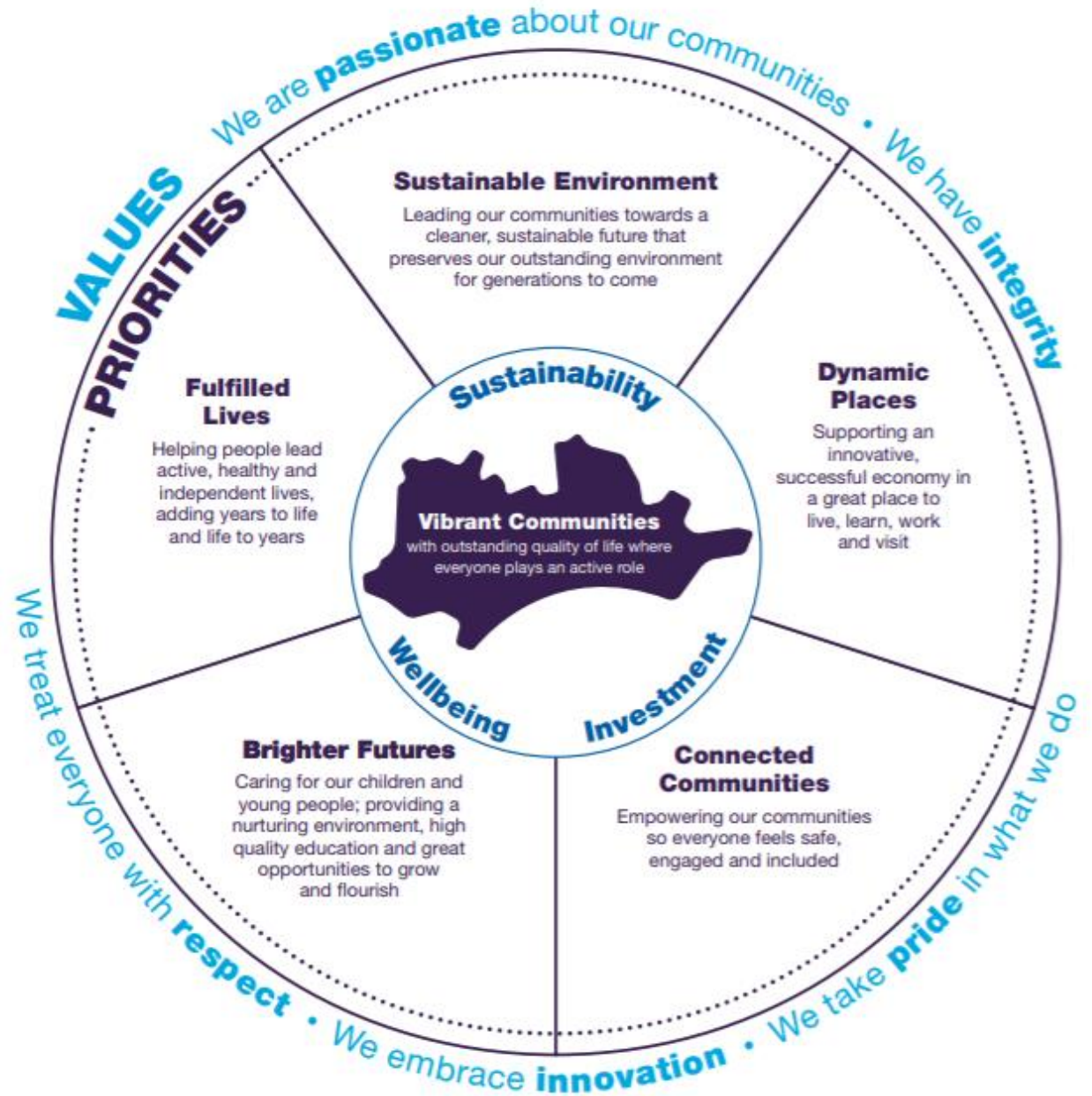
# 1. Introduction

Bournemouth, Christchurch and Poole Council (BCP Council) is a unitary authority formed on 1 April 2019. It was created from the legacy authorities of Borough of Poole, Bournemouth Borough Council and Christchurch Borough Council.

Each year commencing with the year 2019/20 (from 1 April 2019 to 31 March 2020) all local authorities are required through Regulation 121A of the Community Infrastructure Levy Regulations 2010 (as amended)<sup>1</sup> to produce an Annual Infrastructure Funding Statement setting out the contributions received from development and the infrastructure it was spent upon.

The Corporate Strategy (on the right) sets out the type of place BCP Council strives for, and the objectives over the page highlight the importance of developing sustainable infrastructure.

Infrastructure that supports new housing includes parks and open spaces, schools and colleges, a sustainable transport system and accessibility and active travel. New housing sold on the open market can also help fund affordable housing for people most in need. When delivering growth it is equally important to protect our natural environment and tackle climate change.



<sup>1</sup> [The Community Infrastructure Levy \(Amendment\) \(England\) \(No. 2\) Regulations 2019](#)

When granting planning permission BCP Council secures funding from developers for infrastructure and affordable housing in the following ways:

**Community Infrastructure Levy (CIL)** – a standard charge per square metre of additional development. The rates are set out in the CIL charging schedule. There are 3 CIL charging schedules covering BCP Council, one for each legacy authority of Bournemouth, Christchurch and Poole. In time BCP Council will produce a single CIL charging schedule alongside the BCP Local Plan.

**Planning Obligations** – a requirement for the developer to undertake certain actions or pay financial contributions. There are 3 types used by BCP Council:

- **Section 106 Agreement** – legal planning obligation requiring the developer, e.g. for the provision of affordable housing;
- **Section 278 Agreement** – a legal planning obligation requiring the developer to provide specific transport infrastructure; and
- **Section 111 of the Local Government Act** – this option was used by the former Borough of Poole as an option for developers to submit small monetary contributions without having to pay the legal costs of a formal Section 106 Agreement.

The Statement is set out in a series of tables, with contributions from both CIL and planning obligations highlighted. Due to rounding of pence, totals may not tally.

The Statement is structured in chapters to set out:

- Requests for contributions;
- Contributions received from developers;
- Contributions spent on strategic projects;
- Contributions passed to Parish/Town Councils;
- Contributions spent by local communities; and
- Contributions held by the Council at 1 April 2020.

## ► Our Objectives are to...

### Sustainable Environment

- ensure sustainability underpins all of our policies
- protect and enhance our outstanding natural environment
- develop an eco-friendly and active transport network
- tackle the climate and ecological emergency
- promote sustainable resource management
- maximise access to our high quality parks and open spaces

### Dynamic Places

- revitalise and reinvent our high streets and local centres
- invest in the homes our communities need
- create a sustainable, vibrant and inclusive economy
- increase productivity through skills investment
- develop sustainable infrastructure
- support our businesses to operate more creatively
- create a 21<sup>st</sup> century digital infrastructure

### Connected Communities

- strengthen the cultural identity of our towns and places
- respect and engage with our diverse communities
- encourage intergenerational interactions
- reduce loneliness and isolation
- ensure our communities feel safe
- empower a thriving voluntary and community sector

### Brighter Futures

- enable access to high quality education
- be aspirational for our children in care
- support parents and guardians to care for their children well
- prevent harm through early intervention

### Fulfilled Lives

- support people to live safe and independent lives
- promote happy, active and healthy lifestyles
- develop age-friendly communities
- value and support carers
- enable people to live well through quality social care
- tackle homelessness and prevent rough sleeping
- promote lifelong learning for all



BCP Council February 2020

## 2. Contributions requested during 2019/20

During 2019/20, the Council requested developers pay over £10 million of contributions towards infrastructure  
This contains £8.9 million of CIL and £1.25 million through planning obligations

**Table 1 – Contributions requested during 2019/20**

Type	Reporting requirement	Total	
CIL	Total money invoiced in CIL demand notices during 2019/20	£8,872,409	
Planning obligation	Total money to be provided through planning obligations agreed during 2019/20		
	Non-monetary planning obligations agreed during 2019/20	No. of affordable housing units	Nil
		No. school places / category of school	Nil
<b>Total</b>		<b>£10,122,777</b>	

Both CIL and planning obligations are agreed upon the grant of planning permission. However, they are not usually paid until the commencement of the development which may occur several years later. Payments can also be paid in instalments. The amounts set out in the table below therefore do not correspond to contributions received in 2019/20 (Table 2). Furthermore, developments can be altered through further planning permissions over time, often resulting in revised demand notices needing to be issued. Any such re-issued notices are not double counted in this report.

### 3. Contributions received during 2019/20

During 2019/20, developers paid the Council £9.4 million of contributions towards infrastructure  
 This contains £6.3 million of CIL and £3.1 million through planning obligations

**Table 2 - Contributions received during 2019/20**

Type	Reporting requirement	Total BCP
CIL	Total CIL receipts received during 2019/20	£6,336,179
Planning obligation	Total planning obligations received during 2019/20	£3,068,284
<b>Total</b>		<b>£9,404,463</b>



Spurrier's Play Park, Upton Country Park – funded from the CIL Neighbourhood Portion

## 4. Contributions spent during 2019/20

During 2019/20, the Council spent £5.2 million of contributions on infrastructure  
 This contains £2.7 million of CIL and £2.2 million of planning obligations  
 From CIL, £0.9 million was spent by communities on local projects (neighbourhood portion).  
 From Planning Obligations, £0.9 was spent on delivering affordable housing.

**Table 3 – Expenditure on Infrastructure**

Type	Reporting requirement	Total BCP
CIL	CIL spent on infrastructure during 2019/20 (see Table 4)	£2,659,552
	Administrative expenses (5% of total CIL received)	£316,809
	Repayment of loans for infrastructure	Nil
	<b>Total amount of CIL spent during 2019/20</b>	<b>£2,976,361</b>
Planning obligation	Planning obligations spent on infrastructure during 2019/20 (See Table 5)	£2,231,976
	Repayment of loans for infrastructure	Nil
	Amount spent on monitoring planning obligations	Nil
	<b>Total amount of planning obligations spent during 2019/20</b>	<b>£2,231,976</b>
<b>TOTAL</b>		<b>£5,208,337</b>

**Table 4 – CIL spent on infrastructure during 2019/20**

Infrastructure Type	Project	Amount spent
CIL Neighbourhood Portion	See Table 9	£869,337
Dorset Heathlands Mitigation Strategy	Upton Country Park SANG – final phase	£331,817
	Iford Meadows and Playing Fields	£10,213
Open Space	Play areas, Christchurch	£685,000
	Dolphin Swimming Pool, Poole	£157,431
Nitrogen Mitigation	Mitigation land at Briantspuddle – Maintenance of public right of way	£1,142
Sustaining Poole's Seafront	Beach Huts - Shore Road Block 8	£312,085
Poole Town Centre Regeneration	Heart of Poole Development Partner Procurement & Programme Delivery	£292,527
<b>Total</b>		<b>£2,659,552</b>



**Table 5 – Planning obligations spent on infrastructure during 2019/20**

Infrastructure Type	Project	Amount spent	Total per type
Affordable Housing	Holes Bay Rd	£466,291	£896,041
	Turlin Moor North	£17,579	
	Buyback 1 Whatleigh Close	£29,480	
	Buyback 20 Guernsey Road	£102,776	
	Buyback 3 Perry Gardens	£39,996	
	Buyback 41 Turlin Road	£19,345	
	Oakdale Skills & Learning Centre	£70,000	
	HRA Three, Three-bedroom Houses	£40,000	
	Downsizing - refund of removal costs	£27,400	
	Temporary Accommodation (Christchurch)	£35,828	
	Enabling affordable housing delivery	£47,346	
Highways/Transport & Travel	Merley Lane Zebra Crossing	£95,509	£673,882
	Walking and Cycling Schemes	£51,500	
	Business Travel Network	£6,000	
	DLEP Blackwater Junction & A338 Widening	£161,080	
	Priory Car Park refurbishment, resurface and drainage	£47,286	
	Creekmoor Park and Ride surfacing	£312,507	
Transport – Section 278 Agreement	Pilkington Tiles Site Blandford Rd	£1,534	£18,102
	Gillet Road Extension	£165	
	Dunyeats/McCauley Road	£1,657	
	S278 Magna Road/Knighton Lane junction improvement	£5,676	
	Safety Drive PFS	£5,264	
	Denmark Road Carriage Widening	£2,316	
	Fern Barrow and Gillett Road	£1,490	
Open Space and Leisure	Play Project	£9,770	£169,090
	Slades Farm Pavilion	£147,930	
	General Design	£11,390	

Infrastructure Type	Project	Amount spent	Total per type
Dorset Heathlands Mitigation Strategy	Urban Heaths Partnership 2018/19	£41,072	£449,787
	Urban Heaths Partnership 2019/20	£171,462	
	Heathland wardening	£162,174	
	Riversmeet - Stanpit (SANG)	£24,276	
	Dorset Dogs	£960	
	Cherry Tree Feasibility	£1,350	
	Brecon Close	£3,355	
	Heathland Project	£13,588	
	Wildlife Bus	£6,750	
	Hicks Farm SANG	£23,560	
	Other	£1,240	
Poole Harbour Recreation Strategy	Poole Harbour Bird Disturbance Survey 2019	£19,713	£25,074
	Dorset Dog walk in Poole Harbour	£5,361	
<b>Total</b>			<b>£2,231,976</b>



Upton Country Park Suitable Alternative Natural Green Space



Slades Farm Pavilion

## 5. Contributions passed to Town and Parish Councils during 2019/20

During 2019/20, development in the four parish and town councils generated £53,000 to spend in those communities

However, the Council will be passing the parish and town councils £111,000 to include contributions from development in previous years

**Table 6 – Contributions passed to Parish /Town Councils**

Reporting requirement	Burton and Winkton Parish Council	Christchurch Town Council	Highcliffe and Walkford Parish Council	Hurn Parish Council	Total
CIL receipts accrued at 1 April 2019	£7,457	£13,914*	£44,289*	Nil	£65,660
CIL receipts accrued in 2019/20	£11,942	£23,022	£18,294	Nil	£53,258
CIL passed to parish/town council in 2019/20	£7,740	Nil	Nil	Nil	£7,740
CIL held by BCP Council at 1 April 2020 to be paid to parish/town councils	£11,660	£36,936	£62,583	Nil	£111,179
CIL receipts requested back from each parish/town council in 2019/20	Nil	Nil	Nil	Nil	Nil
CIL receipts requested back from each parish/town council not yet recovered at 1 April 2020	Nil	Nil	Nil	Nil	Nil

\*Accrued in past before parish / town council was set up and with 2019/20 payments will be passed to Parish Councils during 2020/21.

There are three parish councils and one town council in BCP Council area, all within the former Christchurch area that all came into being in April 2019. The Council is obliged to pass 15% of CIL receipts received from development within a parish to that parish/town council. The Council also decided to pass on to Christchurch Town Council and Highcliffe and Walkford Parish Council the CIL neighbourhood proportion collected in these areas for the period from the introduction of CIL in January 2017 to March 2019.

None of the parishes have produced a neighbourhood plan, whereby they would receive 25% of CIL collected in the parish. Although neighbourhood plans are currently in preparation by all the Christchurch local councils.

Parish/town councils are required to publish their own statement of CIL spending and publish it on their websites. After 5 years, if monies are unspent the Council can request the CIL contributions back.

## 6. Contributions set aside for unparished areas through the neighbourhood portion

During 2019/20, communities spent £0.9 million of CIL on local projects (the neighbourhood portion) including Hamworthy Paddling Pool, Spurrier's Play area at Upton Country Park, the Christ Church in Creekmoor and Rossmore Leisure Centre.

A further £1.5 million of community projects have been agreed including the Bourne hub, Canford Magna PCC community building, Baiter skate park, Canford Cliffs library and Selkirk play park, with £0.8 million available for allocation to more projects

The four neighbourhood forums have £0.2 million to spend of which £1,700 was spent during 2019/20

**Table 7 - CIL Neighbourhood portion**

Reporting requirement	Amount
CIL neighbourhood portion spent during 2019/20 (See Table 9)	£869,337
CIL neighbourhood portion set aside during 2019/20	£938,425
CIL neighbourhood portion allocated to projects but not spent at 1 April 2020 (See Table 10)	£1,536,383
CIL neighbourhood portion not yet allocated to projects at 1 April 2020 (See Table 8)	£826,841
CIL allocated to the neighbourhood portion or neighbourhood forum, without a specified project and not spent at 1 April 2020	£2,363,224

In unparished areas the Council sets aside 15% of CIL receipts received for spending on community projects, called the neighbourhood portion. Community groups can bid for the monies to fund projects. Unlike parish/town councils, the Council holds the monies and pays for projects on behalf of the community.

**Table 8 - CIL Neighbourhood portion held on behalf of neighbourhood forums**

Neighbourhood forum	Neighbourhood Plan	Total allocated	Spend pre 2019/20	Spend during 2019/20	Commitments unspent	Neighbourhood portion without a specified project
Broadstone	Yes (25%)	£124,499	£2,580	Nil	Nil	£121,919
Boscombe and Pokesdown	Yes (25%)	£2,104	Nil	Nil	Nil	£2,104
Poole Quays	Yes (25%)	£101,155	£10,233	£412	Nil	£90,510
Queens Park and Charminster	No (15%)	£7,938	Nil	£1,274	Nil	£6,664
Elsewhere in BCP Council area	No (15%)	£3,586,229	£576,551	£867,651	£1,536,382	£605,644
<b>Total</b>		<b>£3,821,925</b>	<b>£589,364</b>	<b>£869,337</b>	<b>£1,536,382</b>	<b>£826,841</b>

There are 4 neighbourhood forums in BCP Council area that formed to prepare a neighbourhood plan for the area. Broadstone, Boscombe and Pokesdown and Poole Quays prepared a neighbourhood plan and thereby receive 25% of CIL receipts the Council collects from development in those areas.

**Table 9 – CIL Neighbourhood portion spent during 2019/20**

Ward / Forum	Project	Amount spent
Alderney & Bourne Valley	Branksome Recreation Ground	£26,015
	Rossmore Leisure Centre	£71,916
	Poole Forum	£20,200
	Bishop Aldhelm's Pre School	£50,000
Bearwood & Merley	Longfleet Drive	£5,000
	Merley Lane, zebra crossing	£3,010
	Bearwood Primary School, outdoor gym	£17,568
	Merley First School, living streets and environmental improvements	£29,750
	Mini Fernheath Play	£5,000
	West Howe Community Enterprises	£792
Boscombe East & Pokesdown	Neighbourhood Plan	£1,500
Boscombe West	Boscombe Bollards	£4,890
Canford Cliffs	Canford Cliffs - Phase 1	£1,073
Canford Heath	Canford Heath, drop off zone	£41,855
	Adastral Road, bus stop handrail	£457
	Canford Heath Library CCTV	£1,809
	ARCH Defibrillators	£6,237
	ARCH Adastral Square improvements	£15,000
Creekmoor	Upton Country Park – Spurrier's Play Park	£138,774
	Christ Church, Creekmoor	£95,000
Hamworthy	Hamworthy Paddling Pool	£102,672
	Play Moor Skate Moor Foreland Rd Turlin Moor	£46,612
	The Old Rope Walk Community Centre	£23,600
	Turlin Moor, bus shelters	£31,441
Moordown	Moordown Community Centre toilets	£6,643

Ward / Forum	Project	Amount spent
Newtown & Heatherlands	BH12 Planters	£292
	Sylvan Infants and Branksome Heath Junior Bikeability and Living Streets	£32,694
Oakdale	St Edward's, bike shed and waste store	£38,000
Penn Hill	Abbeyfield Wessex Society	£1,000
	Alexandra Park, environmental enhancements	£3,800
Poole Quays Neighbourhood Plan Area	Boat show mats	£412
Poole Town	Longfleet Primary, cricket nets	£3,240
	Longfleet Primary, bike rack and garden	£11,000
Queen's Park Neighbourhood Plan Area	Wild Flowers Meadows QP & Cyril Gardens	£1,048
	Community Angels	£226
Talbot & Branksome Woods	Coy Pond Red Bridge	£16,075
Winton East	Parks Foundation Winton Rec	£6,600
All Poole wards	Faithworks Wessex	£8,136
<b>Total</b>		<b>£869,337</b>



Play Moor, Skate Moor at Turlin Moor



Red Bridge, Coy Pond

**Table 10 – CIL neighbourhood portion allocated to projects but not spent at 1 April 2020**

Ward / Forum	Project	Amount spent
Alderney & Bourne Valley	Branksome Recreation Ground	£41,696
	Bourne Community Hub	£250,000
	Gateway Church	£20,000
	Alderney Play Park	£15,000
	Talbot School Swimming Pool	£50,000
	Bourne Shop improvements	£9,864
Alderney & Bourne Valley / Newtown & Heatherlands	Recreation Road traffic calming	£9,000
Bearwood & Merley	Canford Magna PCC, community building	£100,000
	Longfleet Drive	£21,000
	Merley Lane, zebra crossing	£36,990
	Selkirk Play Park improvements	£100,000
	Merley First School, living streets and environmental improvements	£250
	Canford Magna Centre, New Kitchen	£37,000
Bournemouth Central	Parks Foundation, The Aviary	£50,000
Canford Cliffs	Canford Cliffs Phase 1	£47,152
	Sandbanks vehicle activated speed sign	£6,325
	The Greenhouse Christian Centre	£11,640
	Canford Cliffs Library extension	£85,000
Canford Heath	Sherborne Crescent crossings	£50,758
	Limelight's Youth Centre CCTV	£182
	Canford Heath Library CCTV	£362
	St. Paul's Church	£12,000
	ARCH Canford Heath	£1,750
Creekmoor	Upton Country Park	£50,726
	Upton House, colannades	£45,000
	Soper's Lane, zebra crossing	£60,000
	Northmead Drive, defibrillator	£3,000
East Cliff & Springbourne	Boscombe Chine Gardens, play equipment	£2,365

Ward / Forum	Project	Amount spent
East Southbourne & Tuckton	Southbourne Heritage Project/ Charles Roll Memorial	£3,000
	Hengistbury Head, defibrillator	£1,800
	Hengistbury Head Outdoor Education Centre	£10,000
Hamworthy	Hamworthy Paddling Pool	£278
	MOD Land, Walcheren Place	£47,500
	Turlin Moor bus shelters	£8,123
	Play Moor Skate Moor Foreland Rd Turlin Moor	£7
Kinson	Bins	£926
Newtown & Heatherlands	BH12 planters	£647
	Turner's Nursery	£4,250
Newtown & Heatherlands / Parkstone / Penn Hill	Community Safety Officer, Ashley Road	£42,000
Oakdale	Oakdale Library Garden Association	£4,872
Parkstone	Lilliput Sea Scouts	£33,518
	Poole Park Railway	£50,000
	Whitecliff Recreation Ground	£1,000
Penn Hill	Alexandra Park	£40,800
	Courthill Infant school improvements	£6,717
Poole Town	Serte Community Garden Association	£664
	Poole Community - Poole Housing Partnership	£3,602
	Baiter Skate Park refurbishment	£100,000
	Poole Quay VE Day celebration	£4,130
Wallisdown & Winton West	Bascott Road, noticeboard	£50
	Daws Avenue, bin	£463
	Glenmoor Road, dog bin by footbridge	£364
	Sids in Daws Avenue	£6,650
All Poole Wards	Good Gym	£20,000
	Faithworks Foodbank	£22,960
	Go Pladdle	£5,000
<b>Total</b>		<b>£1,536,381</b>



## 7. Contributions held by the Council at 1 April 2020

The Council retained £24.8 million of unspent development contributions

This comprises £8.5 million CIL (£7.8 million allocated and £0.7 million unallocated) and £16.3 million of planning obligations

**Table 11 – Planning contributions held by the Council at 1 April 2020**

Type	Reporting requirement	Total	
CIL	Total unspent CIL receipts at 1 April 2020	To be passed to parish/town councils (See Table 6)	£111,179
		Set aside for neighbourhood portion (See Table 7)	£2,363,223
		Allocated to infrastructure (See Table 12)	£7,845,942
		Unallocated	666,329
		<b>Total allocated to infrastructure and unallocated</b>	<b>8,512,181</b>
Planning obligation	Total unspent planning obligation receipts at 1 April 2020	Allocated to infrastructure (See Table 13)	£16,288,324
		Commuted sums (highways)	£32,272
		<b>Total allocated planning obligations and commuted sums</b>	<b>£16,320,596</b>
<b>Total</b>	<b>Total unspent CIL (allocated and unallocated) and unspent planning obligations (allocated including commuted sums) at 1 April 2020</b>	<b>£24,832,777</b>	

**Table 12 - CIL allocated to infrastructure**

Infrastructure Type	Infrastructure Project	Amount	Amount per type
Regeneration	Lansdowne Public Realm Programme	£118,000	£2,918,000
	Heart of Poole	£2,600,000	
	Hillbourne New School	£200,000	
Poole Harbour Recreation Mitigation Strategy	Set aside for funding mitigation projects	£133,670	£133,670
Poole Harbour Nitrogen Mitigation Strategy	Set aside for funding mitigation projects	£1,159,620	£1,182,066
	Mitigation land at Briantspuddle – Maintenance of public right of way	£22,446	
Dorset Heathlands Mitigation Strategy	Set aside for funding mitigation projects	£1,644,902	£1,870,206
	Upton Country Park SANG – General maintenance	£177,004	

Infrastructure Type	Infrastructure Project	Amount	Amount per type
	Open Space Iford Meadows and Playing Fields	£48,300	
Open Space	Fernheath Playing fields - construction of new pavilion	£125,000	£125,000
Highways/Transport & Travel	Hamworthy Crossing	£660,000	£842,000
	Variable Advance Message Systems	£182,000	
Heritage	Heritage Walk	£575,000	£775,000
	Poole Museum HLF	£200,000	
<b>Total</b>			<b>£7,845,942</b>

**Table 13 – Planning obligations allocated to infrastructure**

Infrastructure Type	Infrastructure Project	Amount	Amount per type
Affordable Housing	Hillbourne New School	£825,000	£5,527,048
	Canford Paddock	£385,000	
	Turlin Moor North	£150,000	
	Branksome Cemetery Lodge	£120,000	
	Sopers Lane	£102,000	
	Housing general fund	£53,000	
	Development of Junction Broadstone	£40,000	
	Oakdale skills and learning	£30,000	
	Temporary Accommodation	£115,651	
	Affordable Housing uncommitted	£3,706,397	
Open Space and Leisure	Open spaces and casual play	£872,153	£1,186,508
	Major built facility	£74,345	
	Outdoor play	£7,998	
	Equipped play	£217,244	
	Parks & open space Section 106s	£14,768	
Highways/Transport & Travel	Business Travel Network	£22,000	£5,284,562
	Gervis Place	£208,000	
	Town Centre walking improvements	£115,000	

Infrastructure Type	Infrastructure Project	Amount	Amount per type
	DLEP Blackwater Junction & A338 Widening	£371,703	
	Transport investment	£73,698	
	Highway improvements	£371,332	
	Commuted car parking	£88,079	
	Green Travel Plan	£25,162	
	Traffic Regulation Orders	£40,470	
	South East Dorset Transport Contribution	£551,035	
	Kings Arms - Millstream	£812	
	57 High Street wall repairs	£13,395	
	General highways fund	£2,478,629	
	Section 278 Agreements	£925,247	
Dorset Heathlands Mitigation Strategy	Strategic Access Management and Monitoring (SAMM) and Heathland Infrastructure Projects (HIPs)	£3,094,793	£3,373,508
	Iford Meadows and playing fields	£260,800	
	Granby Road	£17,915	
Poole Harbour Recreation Mitigation Strategy	Strategic Access Management and Monitoring (SAMM)	£79,127	£79,127
Poole Harbour Nitrogen Mitigation Strategy	General fund	£86,162	£86,162
Regeneration	Christchurch Town Centre Strategy Scheme	£209,896	£209,896
Employment	General fund	£539,105	£539,105
Arts	General fund	£250	£250
Wildlife	General fund	£2,158	£2,158
<b>Total</b>			<b>£16,288,324</b>

## 8. Future spending priorities

The Council having formed on 1 April 2019 has through the process of producing this Statement collated the monies held by the three legacy authorities. As shown above £24.1 million of the £24.8 million are allocated for spending on infrastructure.

Future receipts will continue to be allocated towards much needed infrastructure. The Council will review the spending priorities moving forward alongside preparation of the BCP Local Plan to ensure growth is supported by suitable infrastructure.

The Neighbourhood portion and allocations from parish/town councils will be the priority with the following mitigation also necessary to enable development to go ahead:

- Dorset Heathlands Mitigation Strategy;
- Poole Harbour Recreation Mitigation Strategy; and
- Poole Harbour Nitrogen Mitigation Strategy.

In addition the Council can draw upon the infrastructure that supports the implementation of the three current local plans that cover the BCP Council area:

- [Bournemouth Regulation 123 List](#)
- [Christchurch Regulation 123 List](#)
- [Poole Regulation 123 List](#)