

SUMMER 2021



# PINES AND CHINES

The magazine of the Branksome Park & Canford Cliffs Residents' Association



AGM MEETING  
PLANNED FOR  
**11 DECEMBER**  
10am CANFORD  
CLIFFS VILLAGE HALL

CONDITIONS  
PERMITTING

Visit the Association's website [www.pinesandchines.co.uk](http://www.pinesandchines.co.uk)



# K9 SECURITY (GUARDING) LTD



FOR ALL YOUR SECURITY REQUIREMENTS

SECURITY SPECIALISTS & CONSULTANTS

KEY HOLDING - HOME WATCH SERVICE - MOBILE PATROLS - STATIC GUARDS

K9 Security (Guarding) Ltd is an independent Poole based provider of key holding, alarm response, bespoke home watch and security services.

## Alarm Response & Key Holding

As a professional security company we can respond to all your intruder and fire alarm activations and non-emergency requirements. On call 24/7 to respond to alarm activations from as little as £1.15 + Vat per day. No more worrying about who you are going to get to respond to your alarm if you are away.



## Home Watch Service

In conjunction with our successful key holding and alarm response service our Home Watch Service is a totally bespoke security & property service for property owners whilst you are home or away. 100% tailored to your needs. From property checks, taking deliveries to boiler checks in the winter.



# Welcome

I am writing this just after the non-essential shops have opened and we are proceeding along the route to normality, whatever that is. Do hope that all is well with you and yours.

I think one thing that I noticed during the lockdown was how different people looked without a visit to the hairdresser. I eventually went for the 'homemade' kind of cut and no doubt will receive some comments when I venture to the barbers in Penn Hill.

The garden is growing again, and the grass will soon need mowing which means I sit on the veranda and observe. I class myself as a 'static gardener' who likes watching other people actually do the work but delights in the bursting of colour that work produces.

Looking out on the garden I now understand why my Dad liked the spring so much. It really is a time for rebirth and renewal. However, not everything works out and a few years ago we planted some vines but so far it would have been much cheaper simply to have bought grapes from Tesco. I think we have had four grapes in total.

Still, it is the getting outdoors that is important and the lockdowns have meant we are walking more than ever before and have thoroughly enjoyed the cycle rides to Sandbanks. You really do see much more the slower you travel, and I continue to

be amazed by what we did not notice when travelling by car.

The magazine will get to you after the Police and Crime Commissioner elections, I do hope you took the opportunity to vote. Talking about crime, the government is pushing through legislation to strengthen police powers in dealing with unauthorised encampment which is good news for us. Several times in the past residents have suffered from anti-social behaviour followed encampments on the Beach Road car park.

Cycling along the Chine is still an issue although it is good to see the Council have put up 'No Cycling' signs and enforcement is ongoing. The overriding point is that the Chine is a much valued, conservation area and people need to respect that.

One area the Association is currently looking out is how the significant sums raised by the Community Infrastructure Levy (CIL) in our area are spent. It appears that very little is spent in our area and there are plenty of issues concerning road safety that need addressing. The sums involved are in the millions! Watch this space.

## Contents

President's Report	4-5
Treasurer's Report	6
Planning Report	7-9
Let's look at Lindsay Road	10
Our Councillors' Corner	12
A Jewel in Branksome Park	15
Spring on Dorset's Heaths	16-17
Gardening on the Cliff Top	22
Brownsea Open Air Theatre	24-25
The Roots of Social Change	26-27
How dull life would be without a smile	34

**Design & Print:**  
Shadow Design Bournemouth  
www.shadowdesignbournemouth.co.uk

Copyright ©2021 by BPPCRA  
All rights reserved. This magazine or any portion thereof may not be reproduced or used in any manner whatsoever without the express written permission of the editor.

As always, however, we need to remind ourselves that we live in a fantastic location. Enjoy it.

Thanks to all our contributors and if you feel a nagging desire to write an article for the magazine then please contact me. Does anyone have a hobby they would like to share with their neighbours?

Enjoy the read. Very best wishes  
**John Gunton**



FOR ALL YOUR SECURITY REQUIREMENTS

WWW.K9SECURITYGUARDING.COM

PHONE: 01202 740185

EMAIL: EMAIL@K9SECURITYGUARDING.COM

Reputable local company with over 30 years experience in the security industry.



## Executive Committee



**President**  
**John Sprackling**  
01202 751553  
president.bpcra@gmail.com



**Vice Chair & Advertising**  
**Roger Allen**  
07718 635949  
vc.bpcra@gmail.com



**Editor**  
**John Gunton**  
07743 389083  
jngunton@tiscali.co.uk



**Planning Officer**  
**Dugald Eadie**  
01202 761353  
planning.bpcra@gmail.com



**Honorary Secretary**  
**Carol Parkin**  
01202 706591  
carolparkin.bpcra@gmail.com



**Treasurer**  
**Jackie Heap**  
treasurer.bpcra@gmail.com



**Committee Member**  
**Vicky Moss**  
vickymoss.bpcra@gmail.com

### Current Vacancies Chairman & Membership Secretary



## PRESIDENT'S REPORT

Welcome to the Summer edition of the Association's magazine and, thank you, as always, to the Executive Committee and members for their continued support.



Despite the fact that the Association has been unable to hold its regular monthly meetings since March 2020 and its Annual General Meeting in April 2020, the Executive Committee were able to meet at Compton Acres, adopting Coved 19 guidelines, until the beginning of this year when Tier 3 restrictions were introduced and all group meetings were cancelled.

Subsequently, the Executive have been kept in touch during the latest 'lock-down' by email and telephone calls.

We hope to renew the Association's monthly meetings as soon as Covid 19 restrictions allow us to do so. In the meantime, a note for your Diary – the Association's AGM is, provisionally, planned for **11 December 2021** at 10.00 am at Canford Cliffs Village Hall

I wish to pay tribute to all members of the Executive during this difficult time...

Roger Allen, our Vice-Chairman who has done a sterling job keeping the Association running while we search for a new Chairman and, also, keeping our website

www.pinesandchines.co.uk, up-to-date, with Newsletters and other items of local interest.

Roger also continues with the assistance of his loyal band of helpers, to look after the Sunken Garden at Pinecliff Gardens. Volunteers to help with this work are always welcome.

There has been no let-up in the referrals to Dugald Eadie, our Planning Officer, and he has handled these in his usual efficient manner. Dugald also produces a regular monthly report of Planning decisions affecting the areas of Branksome Park & Canford Cliffs which is published on the Association's website.

Jackie Heap, our Treasurer continues to carry out a sterling job in this role, whilst, at the same time, doubling up as the Association's Membership Secretary, whilst we continue to search for someone willing to take on this role.

Vicky Moss, our Special Projects Co-ordinator continues to work tirelessly with the help of our Ward Councillors and BCP Council officer, Wayne Terry, to deal with anti-social

behaviour incidents in Branksome Park Woods.

BCP Council is inviting bids for money from its updated Community Infrastructure Levy (CIL) Neighbourhood Portion scheme from May 2021 and Vicky is co-ordinating the Association's response to this opportunity.

John Gunton, our Magazine Editor, has been busy putting together this edition of our magazine and, last but not least, grateful thanks

to Carol Parkin, our Honorary Secretary.

I set out below the Aims and Objects of the Association. For example, from time to time, we receive reports from residents concerning Planning Enforcement, Tree Preservation Orders/Tree replacements which are passed on to the appropriate BCP Council Department for attention.

**John Sprackling**  
**President**

## Does something feel different to you?

You may have noticed that this edition of the Pines & Chines magazine feels different to previous editions and this is because we have switched to an uncoated recycled paper.

When I first met Roger Allen and John Gunton to discuss the redesign of the magazine, both were keen to improve the print and finish of the publication. We recommended using a silk paper throughout with a gloss laminated outer cover as these finishes give a premium feel, help attract advertisers and improve picture quality. However, the material and the finishes used are not as eco-friendly as they could be. The gloss lamination on the outer cover is essentially a plastic covering and therefore we removed this and the paper used throughout the magazine is now an uncoated recycled paper.



In manufacturing all paper starts out uncoated. Paper is made out of bleached wood fibres, fillers, clay and caulk fillings. To make silk paper, a white clay and caulk filler is used to cover up any imperfections in the paper and this gives it a smooth and brighter appearance. It takes more energy to make the paper this way and therefore is less 'green' compared to uncoated paper which, although goes through 'processes', doesn't go through as many compared to silk.

In the past uncoated paper was only used for office stationery or home printing, certainly not for high-end publications; uncoated paper absorbs the ink and dulls down pictures and colours.

However, it is being used more and more, and the reason for this is that the paper hasn't changed, it's the printing presses that have improved and now use LED-UV ink drying which results in much richer colours even on uncoated paper.

Pines & Chines magazine has always been printed on Forest Stewardship Council (FSC) papers, which means that the trees the papers are sourced from come

## The aim and object of the association

The aim of the Association is to protect the interests of residents, and to investigate on their behalf any aspects which could be detrimental to private properties or public services.

The Association endeavours at all times to maintain good relationships with the Poole Borough Council and to bring to their notice all matters which adversely affect the amenities of the whole of the District.

It also submits recommendations to the Council concerning any plans, developments or financial matters which would improve the Environment, Community, Safety, Amenity and Cost Effectiveness of the area and the residents' quality of life.

The Association is a member of the National Organisation of Residents' Associations and the Campaign to Protect Rural England.

The minimum Annual Subscription is £5.00 per member (or couple). There is a special bulk subscription rate of £3 per flat for apartment blocks.

from sustainable forests, and the ink used in the printing process, are vegetable based. By changing the paper stock and removing the lamination it now makes Pines & Chines magazine a much 'greener' publication.

**Ross Saunders**  
**Shadow Design**

# Treasurer's Report

Our financial position continues to be in good order and I am pleased to report a surplus for 2020 of £1,520. Our bank balance has increased to £37,075 at 31st December 2020.

During the year the membership fee was streamlined to £5.00 per household and the fee for the bulk apartment block scheme was increased to £3.00 per apartment. This has resulted in the income from the bulk scheme rising in the year. We have struggled to collect subscriptions from individual households due to the Covid-19 situation. The effect of the changes is an increase in revenue from membership fees of £1,250 in the year. You may be interested to know that the majority of the membership now resides in apartments rather than individual households.

The Summer 2020 was not produced as a print edition and advertisers were not charged for advertising space. The executive committee agreed to extend the free advertising to the Winter 2020 edition to support those local businesses through a very difficult year.

During the year our main area of expenditure were the magazines, £3,087 and the maintenance and development of the website, £1,232. The website is an asset to the association and during 2020 we have added PayPal in the hope that members will choose this as a method of paying their membership fees. We will be looking at ways to further improve the website in 2021.

## Branksome Park, Canford Cliffs & District Residents' Association Income and Expenditure Account for the Year Ended 31 December 2020

	2020	2019
	£	£
<b>Income</b>		
Subscriptions received during the year	7,685	6,435
Deposit interest	18	46
	<b>7,703</b>	<b>6,481</b>
<b>Expenditure</b>		
Magazine and circular expenses	3,412	4,345
Less advertising revenue	325	4,810
(Surplus) deficit	—	(3,087)
Committee and secretarial expenses	88	660
Committee and Association meetings	191	475
Annual general meeting	-	458
Legal and insurance	189	197
Website	1,232	1,217
Gardens	607	605
Sundries	289	540
	<b>2,596</b>	<b>4,152</b>
<b>Donations and subscriptions</b>		
Canford Cliffs Christmas lights	500	750
	<b>6,183</b>	<b>4,437</b>
<b>Excess of income over expenditure</b>	<b>1,520</b>	<b>2,044</b>
<b>Balance sheet at 31 December 2019</b>		
<b>Accumulated fund</b>		
At 1 January 2019	35,555	33,511
Excess of income over expenditure	1,520	2,044
At 31 December 2020	<b>37,075</b>	<b>35,555</b>
<b>Represented by:</b>		
Debtor-advertising revenue	-	125
<b>Cash at bank:</b>		
Barclays saver account	22,981	22,963
Barclays current account	5,767	4,746
Santander business account	8,327	7,721
	<b>37,075</b>	<b>35,555</b>

Approved by J. Sprackling (President) & J. Heap (Hon Treasurer)  
25 March 2021

We continue to support local initiatives including the Pinecliff Sunken Gardens and the Canford Cliffs Village Christmas Lights although with a reduced donation of £500 this year due to the difficulties experienced in producing the display.

A large proportion of household subscriptions are collected by our wardens. My annual plea is that all members who currently pay their

subscription by cheque or cash consider alternative ways of paying either directly to the associations bank account or by using the PayPal facility on the website. If you were unable to pay your subscription in 2019 and/or 2020 I would be grateful if you would bring your subscriptions up to date. We have adopted a policy of removing members from our list every January if their subscriptions are more than 2 years overdue.

Finally, I would like to place on record my thanks to Peter Schofield of Schofield's Chartered Accountants who has once again prepared the final version of the annual accounts without charge. Peter has kindly provided this service for many years and I am most grateful to him for his continued support.

**Jacqueline Heap**  
Hon Treasurer



## Planning Report

Since my last report in September 2020 the planning process has been a bit variable, but progress has been made. As always, there has been some disappointment, but also some success.

One area which has become a serious worry is the stretch of Burton Road from number 2 to number 6. There are now three separate applications for blocks of flats, which should not be possible in our main Conservation Area. If all three existing houses were demolished and replaced with blocks of flats, it would be detrimental to a large number of neighbours, including those in Dover Road. I have pointed out on many previous occasions that the existing blocks of flats in that area have large gardens, good tree coverage, and plenty of parking and garaging. None of that would apply in these three sites.

There have been a number of cases where Planning Inspectors have dismissed appeals where applicants wanted to increase density by site-splitting or by building houses so large that they are too close to the edges of the plot. The importance of tree cover has also been recognised. These decisions are mainly for sites within a Conservation Area, and I am pleased if that is still being taken seriously despite all

the pressure to increase density of housing.

Over our neighbourhood as a whole, it is clear that we do still need to see a continuous process of development. There are many properties which will need to be replaced in due course. The challenge is how to achieve this without destroying the overall quality of our area. In my view the key issues are to avoid removing too much space, and to try to preserve the sylvan ambience by protecting trees, or at least planting plenty of new ones. As always, I remain grateful to the Planning Team, who do work hard to achieve an appropriate balance.

### SIGNIFICANT DECISIONS 2 Wilderton Road. APP/18/01072/F ALLOWED ON APPEAL 17 November 2020

After a long and complicated process, the Planning Inspector allowed this development of 25 flats. Most people have accepted that it was not possible to restore and retain the existing listed building, but the immediate

neighbours would have preferred a smaller building, and remain concerned about their privacy. The new block of flats will be quite well shielded from the road, but there remains concern about the protected trees. The development has now started, and it will be interesting to see how it looks once it is completed.

### 3 Brudenell Road. APP/20/00407/F GRANT 23 November 2020

This site has been derelict for a number of years, and now there is permission to build a block of 6 apartments, together with 2 detached houses. Many immediate neighbours were unhappy with these proposals, but at least we can now expect the site to be restored.

### 2 Chesterfield Close. APP/19/01531/F DISMISSED ON APPEAL 11 January 2021

The Planning Inspector made it clear that this proposed site-splitting was not appropriate in the Conservation Area. He



confirmed that the proposed 2 houses were too close together and did not leave enough space at the edges of the site.

**4 Western Road.  
APP/20/00932/F  
DISMISSED ON APPEAL  
18 February 2021**

This was another revised plan for a block of 4 flats, with car parking on the ground floor. The Planning Inspector stated that the building was too large for the small site, and pointed out that many of the windows and balconies would overlook neighbours rather than the garden of the property.

**16 Western Road.  
APP/20/00456/F  
DISMISSED ON APPEAL  
19 February 2021**

This appeal was lodged because of a lack of response from the Planning Department. Both versions of the proposed large house were included. The Planning Inspector pointed out that the existing bungalow was already on a split site, and said the proposed house was too intrusive and too close to the boundaries. The proposal was not consistent with the management plan for the Conservation area.

**12 Eaton Road.  
APP/20/00698/F  
DISMISSED ON APPEAL  
25 February 2021**

This site-splitting proposal had an appeal lodged because of a lack of response from the Planning Department. Although it does not seem appropriate for the Chester Road Conservation Area, the Planning Inspector dismissed it for other reasons. A new application has now been submitted.

**7 Canford Cliffs Avenue.  
APP/20/00424/F  
ALLOWED ON APPEAL  
23 March 2021**

The neighbours in Canford Cliffs Avenue and Widdicombe Avenue will be disappointed by this

decision, which allows a new house to be built in the garden of the corner house. The new house will be much closer to the road than those next to it, and the access is on an awkward slope. The Planning Inspector decided that it was not inconsistent with the overall pattern of Canford Cliffs Avenue.

**SIGNIFICANT ISSUES STILL  
OUTSTANDING  
2 & 2A Burton Road/  
22 Balcombe Road.  
APP/19/01224/P  
31 October 2019**

As soon as the 30 flats were granted permission at 18 to 20B Balcombe Road, this new proposal appeared for a block of 37 flats. This should not be possible, as the site is in the Branksome Park Conservation Area.

**Carisbrooke, 172 Canford Cliffs  
Road. APP/19/01569/F  
6 January 2020**

The BCP Planning Committee granted permission on 26 November 20 for this McCarthy & Stone development of 60 assisted living/extra care apartments. However, a decision notice has not yet been posted on the planning website.

**2-4 Leicester Road.  
APP/20/00276/F  
12 March 2020**

This is a proposal to replace three bungalows with three blocks of flats (37 in total). It is within the Conservation Area, but of course is quite close to the McCarthy & Stone development in Lindsay Road. One serious problem would be the impact on traffic near Penn Hill, between the two sets of traffic-lights

**6 Burton Road.  
APP20/00437/P  
5 June 2020**

The previous application has been withdrawn, and replaced with this new one, which seems to be very similar. It has received a

large number of objections from neighbours. This is an outline application to demolish the existing bungalow and erect a block of 12 flats. The site is on the edge of the Conservation Area, and next to a listed building. The proposed building would have a particularly damaging impact on properties in Dover Road, and the parking and traffic issues are a major concern.

**20 Leicester Road.  
APP/20/00558/F  
30 July 2020**

This is the third attempt to build a new house in the garden, next to the main road. Previous efforts were rejected by two different Case Officers and two different Planning Inspectors, but the applicant will not give up! This site-splitting should not be allowed in the Conservation Area. An Appeal has now been lodged, confirmed on 12 February 2021.

**2A Martello Park.  
APP/20/01013/F  
30 September 2020**

This development has now been acquired by another developer who once more applied for permission to add an extra flat on the 5th floor, even though this was previously rejected. The application was Refused by the BPC Planning Committee on 18 December 20. An appeal has been lodged, confirmed on 21 February 2021. Meanwhile, two strange applications have been made by the same developer to add extra flats to neighbouring blocks of flats – these are requesting “prior approval”, and seem to be related to the recent change in planning rules in relation to raising the height of buildings.

**28 Bury Road.  
APP/20/00900/F  
5 October 2020**

This is a proposal to replace a tennis court with a detached

house. The site already has a history of similar attempts, and this one would be particularly damaging for the house on Canford Cliffs Road which backs on to it. There is also concern about the impact on the footpath which joins Canford Cliffs Road to Bury Road. As this is in a Conservation Area, the site-splitting should not be allowed.

**Flaghead Cliffs (SE of Cliff Drive).  
APP/19/01265/P  
APPEAL  
9 October 2020**

This was a revised proposal for 12 new Beach Huts, after a previous one for more was refused. It is controversial because it is not clear how it would affect the safety of the cliffs, and they would be privately owned, meaning that the Council might not be able to control the use of the huts. Following the refusal of this application, an Appeal has now been lodged (confirmed on 9 October 20).

**142 Canford Cliffs Road.  
APP/20/01365/F  
9 December 2020**

This site currently has a rather attractive “Mock Tudor” house called Mount Grace. Unfortunately, this is an application to replace it with a block of 13 2-bedroom apartments. There is a history of proposals for this site, all of which have previously been refused.

**4 Burton Road.  
APP/21/00211/P  
9 February 2021**

This is yet another proposal, this time to replace the existing dwelling with a block of 13 flats. The first application was to demolish the existing single house and replace with 5 houses, with very little space for parking, and built quite close to the boundaries. After the refusal, a second application was made (15 Oct 19) to make changes to the existing house and build 3 new houses in the garden. This was also refused, quite promptly. The plot is in the Branksome Park Conservation Area, and should not be developed in this way. Residents of Dover Road are particularly concerned, as the plot is above their back gardens.

**12 Eaton Road.  
APP/21/00339/F  
1 March 2021**

Following the dismissed appeal on 25 February 21, this application has been re-submitted. It still seems inappropriate for the Chester Road Conservation Area. The proposed house is very close to its neighbours, and uses a garden area that must have been left open deliberately when the road was originally developed. More trees would be a better solution.

**Dugald Eadie**

# ASHLEY BLINDS

curtains • shutters • awnings

*perfectly made to measure*




**BUY WITH CONFIDENCE**

TRADING STANDARDS APPROVED

**LOCAL FAMILY COMPANY  
ESTABLISHED 17 YEARS**

*Call us now to request your  
FREE home appointment*

**01202 649649**

**www.AshleyBlindsUK.com**

## Let's look at Lindsay Road

Starting at the junction with Leicester Road, close to Penn Hill Corner, Lindsay Road winds uphill to St Aldhelm's Church and then runs parallel to Poole Road until it joins the Frizzell Roundabout (County Gates).

A Lidl food store opposite the church in St Aldhelm's Road was once the site of a newspaper and periodical printing plant under the name of Southernprint. Originally known as the Times-Herald building, the plant printed the Bournemouth Times, Poole and Dorset Herald and other local newspapers together with a number of national magazines and periodicals.

Houses listed in the 1918 Kelly's Directory for the north side of Lindsay Road after St Aldhelms were Wyuna, Reedley, Tottenhall, Highwood, Yaverland, Holly Lodge, Kilbride, Brackloonagh and Christowell. By 1939 several of these were in multi-occupancy, Lindsay Manor has appeared near County Gates and Lindsay Hall next to St Aldelm's Church. Several properties had been built on the downward stretch between the church and Leicester Road (mainly bungalows). By 1961 Lord Ventry was living in Lindsay Hall where now stands Ventry Close.

Lord Ventry had two main interests, one was the Scout Movement and the other was airships. In the 1950's he was Group Scoutmaster at the 4th Branksome Scouts at St Joseph's Church. His large garden was used by Poole Scouts as a



*Lindsay Manor, original home of Wessex Bridge Club  
Courtesy: Terry Udall*

training ground and for District events such as campfire evenings. With his consent the Lindsay Hall Training Ground was equipped to form part of the Poole Baden Powell Memorial Plans as a practical way of commemorating the work of the Founder of the Boy Scouts. Lord Ventry was once reputed to have said that Lord Baden-Powell had done more for the world's youth and all the world's politicians put together.

The site in Lindsay Road was given by Lord Ventry to the Borough of Poole Scout Association: the land was sold and the proceeds invested. Before he died Lord Ventry had agreed that this was a sensible decision. For any years the Dorset Scout Council had wanted to acquire a permanent training ground and camp site that would be available for Scouts from all over the county and after a lot of research a suitable site was found in the Purbeck, not far from the East Dorset Golf Club. The money invested from the sale of Lindsay Hall enabled Buddens farm (near Wareham) to be purchased at the end of the 1990's and has proved a most valuable acquisition.

Travelling eastwards towards what is now Liverpool and Victoria roundabout, Tesco's is found bounded on one side by Poole Road and Lindsay Road on the other. The opening of the supermarket on 7 December 1993 followed several years of controversy as to whether the store should be built. The site was previously occupied by F English Limited with a Ford motor showroom, workshop and petrol station. The development was the first to breach the high brick wall along Poole Road which had served as a boundary of C W Packe's Branksome Estate. The wall divided the residential area of Branksome Park from the rest of Branksome, and four large properties had been demolished to make way for the 'state of the art' showroom and filling station.

*Published by kind permission of Iris Morris from her book 'Looking Back at Branksome Park'.*

*Accompanying picture of Lindsay Manor is by courtesy of Terry Udall (How is it that old buildings always look nicer than modern ones? Bet they weren't as energy efficient though-Editor)*



## BESPOKE KITCHEN DESIGN FOR BEAUTIFUL HOMES



### Expertly designed kitchens for Dorset homes

Your home is your castle, and when it comes to making it perfect, you need to use contractors that not only share your vision but are reliable, responsible and creative.

At Dimension Kitchens, we are proud of our reputation of being quality craftsmen that deliver bespoke kitchen design and installation. Whether you are looking to revamp your existing kitchen or want a whole new design, we can help to create your ideal home.

With the combined expertise of our team, Dimension Kitchens will guide you through your kitchen design process ensuring that each stage is stress-free and simple.

Whatever your plans for your kitchen, Dimension Kitchens can help to make them a reality.

Please get in touch to arrange your **FREE** kitchen design consultation with our expert kitchen fitters.

07966 977493

info@dimensionkitchens.com

www.dimensionkitchens.com







## Our Councillors' Corner

We very much hope that you are keeping well and looking forward to lockdown being lifted so that we can once again meet with family and friends. It has been a challenging time for many, with some having to shield, some putting themselves at risk to continue providing essential services and to parents who had to juggle home working and home schooling.

Then there are also the many volunteers that have stepped up to help others. We thank all of you for staying the course and doing your bit to keep us all safe.

With summer nearly upon us, plans are in place to deal with what is expected to be a very busy season. We have listened to the issues that raised most concerns such as toilet provision and litter. Toilets on the seafront will remain open for longer hours and triple-sized bins (as seen above) have been provided along the seafront to deal with waste, and more daily collections will take place, with manual crews being stood up on days when the promenade is busy.

Other issues such as bonfires, overnight camping and anti-social behaviour are also included as part of this tactical response. As your ward councillors, we have worked hard to highlight all the issues that were raised with us from last year to provide a comprehensive plan that covers all the eventualities that we are aware of.



The plan was drawn up with the police who are working alongside the council. Cllr Mohan Iyengar as cabinet member with responsibility for the Seafront areas and Cllr May Haines who has responsibility for Community Safety are part of the task group that helped to shape this plan which went into operation from 29th March.

Read more about the plans on <https://www.bpcouncil.gov.uk/News/News-Features/Summer-readiness/Summer-readiness-across-Bournemouth-Christchurch-and-Poole.aspx>

Or alternatively, google BCP Summer Readiness plan

**Cllrs May Haines and  
Cllr Mohan Iyengar**

## Apartment Block Membership Scheme



The Branksome Park and Canford Cliffs Residents Association is an active group of local people, their families and local businesses who seek to preserve the wonderful environment in which we reside. We work closely with residents, councillors and local stakeholders to conserve, enhance and preserve both local amenities and the local environment. The BPCRA is also an optimistic organisation that is willing to support worthy projects that will serve to further enhance where we all live.

We always welcome new members and offer an Apartment Block Membership Scheme. If all apartments join as a block, then we offer a discounted rate of £3.00 per apartment per annum. We bill you annually through your Managing Agent with one invoice covering the fees for all the apartments in the block. Twice a year the Pines and Chines magazine is delivered to the apartment block, residents can attend our meetings and subscribe to our newsletter.

Contact our Treasurer for more information: treasurer.bpcra@gmail.com



**SPL**  
Property  
Management



## Managing leasehold property since 2009

Our award winning team covers all aspects of block and estate property management across the South West of England providing a professional, yet personal, approach.



Accredited by:



Established in 2009 and covering Bournemouth, Poole and the local area	Residential Leasehold Property Management Specialists	Members of the Association of Residential Managing Agents (ARMA)	Designated and secure bank accounts for each property
Responsive in-house maintenance team	Online portal for all clients giving immediate access to information	Specialist property management accounting software	Honest and transparent approach

**Contact us today to discuss the management of your property**

info@splmanagement.co.uk | www.splmanagement.co.uk

01202 555560

## A jewel in Branksome Park

There are many benefits to my living in Branksome Park. Opposite, the start of Branksome Chine a wooded walk of some thirty five minutes down to the sea. Quiet roads, almost country greenery, empty save for the odd dog walker, both aspects providing me with 'green therapy' during lockdown. But one destination through those roads and footpaths is a mere half an hour's walk away, the bijou gardens of Compton Acres.



'Bijou' in its original sense of being a 'gem'. But also, in the estate agent's cliché ('bijou residence'), small, for ten acres is not large by public garden standards. But, within that area, at least half a dozen quite different and separate gardens. Linked by meandering paths, you come upon each as a surprise. First the wide open formality of The Italian Garden now backed by the Italian Villa. A wonderful wedding venue in happier times. Through a 'grotto' tunnel and into the 'Wooded Valley'. This is 'natural' landscape, shrubs like rhododendrons and camellia under a canopy of pine. This was a favourite for Fay and I. Ground cover plants growing there would also do well on our own little slice of wooded hillside, conditions being similar. Logically, at the lowest point of the valley where water will accumulate, a bog garden has now been created.

The path continues along the valley floor. Passing a well concealed housing for a pump which provides power for an amazing series of

waterfalls down the valley, the highest must be at least 20 ft drop. Open areas bright with spring flowers, including the quite exotic looking native, the purple snake's head fritillary. Up again, and through another grotto and into the 'Rock and Water Garden'.

The adventurous take the higher path, a hump-backed bridge over the water. The wheelchair path has a view through the perfect curve of the bridge, of a graceful dancer, a sculpture in the middle of the stretch of water. A viewpoint at the end commands a view over the whole of the steep valley.

On past the small summertime cafe, where, from its terrace, you can see Poole Harbour and Brownsea. Then on to the steep and rocky hillside of The Heather Garden. Through there, and widely acknowledged as the best of all, is The Japanese Garden. An authentic red painted Japanese Tea house reflected in waters which the adventurous can navigate by a series of stepping stones.

I lifted my lockdown spirits with their early spring flowers, RHS membership giving me free off-season access. But I was even more happy to buy a 'family ticket' for daughter-in-law Julie, and eight-year old Blake. His first experience of 'gardens' (apart from granddad's). An ideal introduction, helped a little by the 'Easter Bunny Hunt' which by naming each garden made him more conscious of the structure.

Winding paths, exciting tunnels, a bronze sabre-toothed tiger lurking in the undergrowth: and the constant variety of quite different styles of garden, held his interest. A good introduction to gardens and garden design, and hopefully starting the youngest of the next generation on a love affair with gardens.

David Reeves (Ed-absolutely agree David that Compton Acres is a gem. Well done to Bernard and Kaye and their team for keeping it going during lockdowns and everything else that was thrown at them)



Compton Acres – Not Just

Dorset's Finest Gardens...



Compton Acres is renowned across the UK as one of the country's finest private gardens... BUT

Did you know that the multi-award winning tourist attraction is also home to a wide variety of charming gifts and culinary delights?

Visit the Compton Acres Gift Shop & 'Gifted Moments' store for:

- Locally sourced and fair trade treasures
- Scrumptious confectionery
- Sophisticated wines
- Hand crafted children's toys
- Stylish kitchenware
- Luxury beauty products
- And more!

Compton Acres is also home to one of Dorset's most popular Café and Tearooms. Indulge in wholesome, home-cooked dishes, inspired by Great British classics, as well as a mouth-watering variety of traditional homemade cakes and pastries.

If you're looking for a world of elegant gifts, tastes, smells and delights - right on your doorstep, visit **Compton Acres...**

164 Canford Cliffs Road, Poole, Dorset BH13 7ES | Tel: 01202 700 778

[WWW.COMPTONACRES.CO.UK](http://WWW.COMPTONACRES.CO.UK)



# Signs of Spring on Dorset's Heaths

To the uninitiated our local heathlands might look a little scrubby but they are chock-a-block with wildlife! This is never truer than in late spring and early summer when they are simply buzzing with life.

In April, heathland is alive with activity as warm spring weather triggers all manner of natural changes. The bright yellow flowers of European gorse (*Ulex europaeus*), which blooms in January, are a familiar sight and smell (think coconut scented lotion) to those who visit our heaths. With spring, other heathland flowers will start to bloom, such as the beautifully delicate Heath Milkwort (*Polygala serpyllifolia*).

Since late February, early emerging butterflies, such as red admirals, commas and brimstones have been spotted going about their business on our heaths. With spring we start to see some of the other heathland species. The silver-studded blue butterfly is a heathland specialist

with an unusual lifecycle. The fully formed caterpillar of the species hatched from its egg during March and is now being closely attended by black ants which feed on sugary secretions from glands on its body – the caterpillar receiving protection from predators in return for this gift!

The warm weather is also enjoyed by other heathland invertebrates. The adults of the green tiger beetle (*Cicindela campestris*) are sun lovers. As average temperatures rise they will become active, patrolling sandy patches of the heath to look for their prey, other invertebrates.

This is of course a very busy time of year for birds too, as many species are now mating and nesting. As traffic is still slightly



©Ray Hamilton

less than other years, take the opportunity to listen out for the symphony of song during the breeding season as you are out and about. On the heath the Dartford warbler and stone chat perch on conspicuous gorse branches singing to guard their territories.

The onset of warmer weather encourages our reptiles to emerge

*The lowland heath we have on our doorstep an extraordinary habitat with a fascinating annual calendar. I hope you have been able to enjoy the signs of springs on our heathlands or elsewhere. Please remember to follow the Countryside code and 'take only photos, leave only footprints'.*

from hibernation. The adder is the first of our snakes to appear, with some emerging from their hibernation sites (known as hibernacula) over two months ago! By this time of year male adders have started 'dancing', which is actually a wrestling match for dominance in which they intertwine and try to push each other to the ground. Note, they do not use their venom in these competitions. Venom is a vital resource and they save it for the more important task of immobilising their prey. Grass snakes typically come out of hibernation in late March or April, seek a mate, and lay their eggs in rotting vegetation in June or July. If you have a garden leave piles of vegetation and you may be lucky enough to support their next generation! Smooth snakes are the last of our British snake species to emerge from hibernation. This happens from April and into May. Due to the secretive nature of the species, we know little about its preferences for hibernacula – something we hope to better understand during ARC's four-year Snakes in the Heather project.

At Amphibian and Reptile Conservation we are always working to take action to conserve reptiles, and we use the latest science to help us to do so. This is especially important for the smooth snake, our rarest and most elusive reptile, and a local to Dorset!

The lowland heath we have on our doorstep an extraordinary habitat with a fascinating annual calendar. I hope you have been able to enjoy the signs of springs



©Chris Dresh

on our heathlands or elsewhere. Please remember to follow the Countryside code and 'take only photos, leave only footprints'.

**Owain Masters**  
Engagement and Education  
Officer at Amphibian and Reptile  
Conservation.



©Richard Steel Wildlife Trusts



©Gail Hampshire



# 

## GLOBACARE

Health & Life Insurance Experts

Globacare is a local family run firm, with over 15 years experience specialising in private medical & life insurance, helping local, national & international clients.

Being one of the leading brokers for private medical insurance, Globacare takes pride in going above and beyond for all of their clients, assisting them through difficult times, making sure they are fully supported every step of the way through their claims on the journey to recovery.

### Why it pays to review your health insurance

One of the most common misconceptions with the clients, is that they'll lose existing medical history if they change providers, happily this could not be further from the truth.

Reviewing your insurance is safe, simple and should be looked at every 12 months to make sure it is in line with the rest of the market.

Our three core principles:

1. Protect your medical history
2. Increase your cover benefits
3. Reduce your premiums

We have the knowledge, experience and moral compass needed to give our clients the best advice on all aspects of their health insurance needs.

"Globacare have helped save my patient's significant sums of money on their medical insurance & have trusted them with my patients for many years"  
Dr Chris Critoph - Nuffield/BMI Harbour



"Globacare immediately gave an impression of knowledge & professionalism, so I continued to listen. They understood my situation completely and provided measured and useful advice which I have acted upon. I feel confident that the advice will be advantageous to my situation."  
- Mrs Dobinson



### Why choose Globacare?

Given the current climate with Covid & the related issues arising from it, it's apparent now more than ever that our mental & physical well-being is of the utmost importance.

We can give peace of mind when you need it most, we're there every step of the way. From annual reviews, claim handling, getting the most from your policy benefits & simplifying the treatment path.

When it comes to reviewing your health insurance or considering a new policy to protect your health - it's essential you speak to an expert. Nothing beats the experience of dealing with a company that really listens to what you need. we are here to tailor your policy to fit your lifestyle and circumstances.

"Globacare have helped me with my private healthcare cover for 3 years now and, in all that time, they have provided incredible service. I really value their extensive knowledge and expertise in what can be a very confusing market. They give open and honest advice, opinions and recommendations based on my personal and family requirements."  
- Paul Andrews



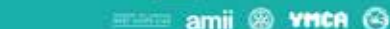
"Excellent service from beginning to end. Also saved us some money, always a bonus! Everything was explained simply and in a straight forward fashion."  
- Mrs Boucher



Quote Pines when you call 01202 929349 & receive £50 John Lewis voucher simply by reviewing your policy

#### HOW CAN WE HELP YOU?

Health Insurance • Life Insurance • Business Protection  
Put us to the test. Call us on 01202 929349 for a quote or email the team at [info@globacare.co.uk](mailto:info@globacare.co.uk)



Proud to partner West Hants. Supporting Dorset Air Ambulance & YMCA, Alzheimers society.

For those who are not familiar we operate out of an iconic 1920's Bournemouth building with a rich history.

The Fire station in Wimborne Road, now renamed The Old Fire House served Winton and the surrounding area throughout the Second World War and into the 1950s alongside the Fire Station in Redhill.

Previously a dedicated living quarters for firemen and once home to a local hero Jim Collingborne who tragically died trying to put out a blaze on the East cliff in 1956.

Although the bravery of its previous inhabitants can never be emulated, Globacare takes pride in continuing the spirit of the old building, the old school morals & ethics of helping others much like its previous occupants.

This isn't just something we apply when helping our clients protecting their health, guiding through claims or providing value in how their policy operates in future. We continue to take huge pride in our charity work and sponsorship within the local community and some of our endeavours include;

YMCA – The Big Sleep Easy - the businesses that have taken part have collectively raised over £1.5m since 2010.

Our sales Manager Will embarked on running 100 miles spread out over the freezing temperatures of January raising over £1300 for the Alzheimer & Dementia UK society.

We continue to raise funds for the Dorset & Wiltshire Air Ambulance, a cause close to our hearts. A big thank you for all those who have generously contributed to these worthy causes. At times like these, helping local charities is imperative to continue their efforts helping others.



Globacare have partnered with the prestigious West Hants Tennis Club for the past 3 years supporting local talent, the academy, encouraging tennis in the local community & nationally around the country.

Once restrictions are lifted we hope to get out into the local community more so we can put a face to the name of some of our lovely clients and also continue doing home visits for prospective clients who like to discuss their options in person.

If you are someone who currently has a private health plan and would like a free independent review. Please feel free to arrange an appointment by calling us on 01202 929349



#### HOW CAN WE HELP YOU?

Health Insurance • Life Insurance • Business Protection  
Put us to the test. Call us on 01202 929349 for a quote or email the team at [info@globacare.co.uk](mailto:info@globacare.co.uk)



Proud to partner West Hants. Supporting Dorset Air Ambulance & YMCA, Alzheimers society.



# Membership Application

BRANKSOME PARK & CANFORD CLIFFS RESIDENTS' Association

## The Aims and Objectives of the Association

The aim of the Association is to protect the interests of the residents and to investigate on their behalf any aspects which could be detrimental to private properties or public services. The Association endeavours at all times to maintain good relationships with Poole Borough Council and brings to their notice all matters which adversely affect the amenities of the whole of the District. It makes appropriate recommendations for improvements. It also submits recommendations to the Council concerning any plans and developments which relate to the District.

The Association is a member of the National Organisation of Residents' Associations and the Council for the Protection of Rural England.

Members receive two magazines – our Summer and Winter editions. These cover much of our ongoing work. Plus we hold regular monthly member meetings to which you will receive notice through our email newsletter. Regular news items and much more feature on our website **www.pinesandchines.co.uk**

It's so easy to join, just follow these four steps to pay your annual fee of £5.00 per household:

1. Make your Standing Order payment to Branksome Park & Canford Cliffs Residents' Association
2. Barclays: Sort Code: 20-11-39: Account Number: 00201804
3. It is particularly important to provide your name and Postcode for the payment reference.
4. Email your name, address, telephone number to the Association's Treasurer <treasurer.bpcra@gmail.com>



Or, pay through PayPal  
<<https://www.pinesandchines.co.uk/paypal-membership-form/>>

Or, complete the application form below and the STO mandate opposite then return them to Jackie Heap at The Parish Office, Branksome St Aldhelm Centre, 401 Poole Road, Poole, BH12 1AD.

Name .....

Address .....

.....

.....

.....

Post Code ..... Tel No: .....

Email .....

We look forward to receiving your application.

Contact will only be made by members of the Executive Committee and all information provided on the Application Form is restricted to use within the Residents Association and is not shared with anyone or any organisation outside of the Association.

The Association registered with the Information Commissioners Office and adheres to the Data Protection Act.

\*Contact the Treasurer for further information.

## Standing Order Mandate

To:	Bank	
	Branch address	
	(insert your bank details)	

Pay to:

Bank Barclays  
Account Name Branksome Park and Canford Cliffs Residents Association  
Account number 00201804  
Sort code 20-11-39

***This replaces any existing standing order to the Branksome Park and Canford Cliffs Residents Association paid to this account or to its account with Santander.***

Debit my account as follows:

Account name	
Account number	
Sort code	

**With the following amount and on the same date each year until further notice: (£5 per household)**

Amount in figures	
Amount in words	
Payable on following date	
<b><u>Reference: insert membership no. if known</u></b>	

Name	
Address	

Signature	
Date	

## Gardening on the Cliff Top

Our BPCCR Garden volunteers are a happy band of brothers and sisters, burrowing away on the cliff top. And we're back after another enforced lay off. Some of us did sneak in a bit of weeding when taking our daily constitutional, observing government guidelines of course.

No picnics, no sly bottles of Rioja or Chablis. Face masks firmly fixed in place and trowel in hand so a few weeds could be removed during the lockdown.

Sometimes under the cover of darkness but always by singletons crouching low behind the hedges, occasionally communicating by well known local bird calls.

After a surreptitious bit of hoeing the lone walking gardener would then retreat through the woodlands risking life and limb as the BMX boys hurtled around the woodland paths.

Now we're back to normal, or almost. The BMX boys are back at school and our little platoon can now show themselves in all their gardening finery. Long haired lady gardeners fresh out of lockdown have been pruning with a vengeance. The boys have been on fine form too. But we have a new development close by and quite a welcome one too.

The shelter at the top of the steps has turned into a daytime cocktail bar with ribald laughter and fiery debate and what a fine group they are. There is talk of an affiliation between the Garden Volunteers and the Canford Boozers but I see a snag.

Our crowd will be up for a drink or two but will they help out with the weeding and pruning?

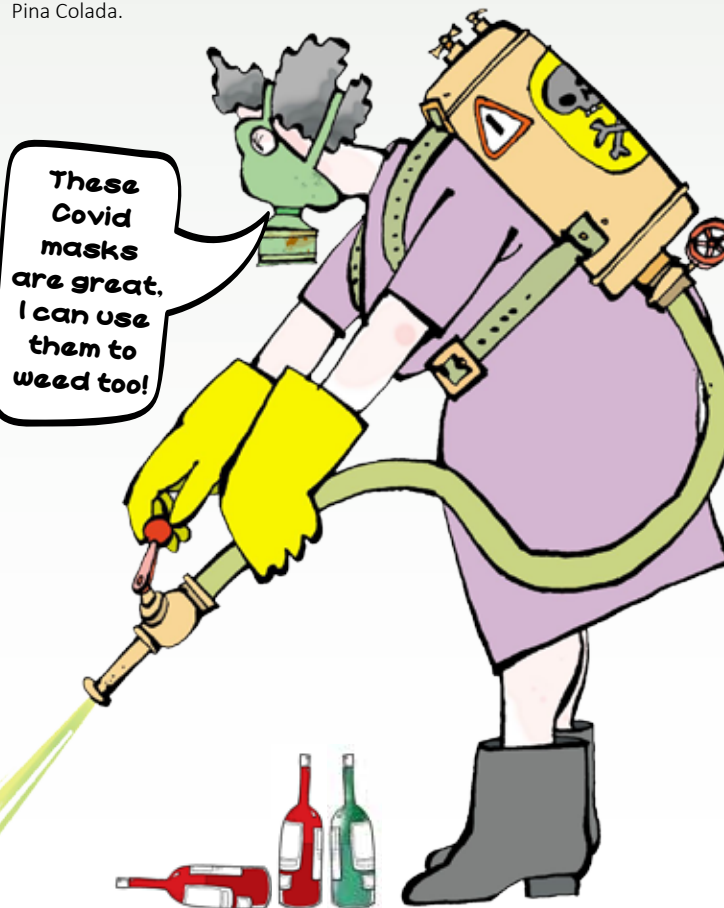
That's a question to answer.

The main thing is normal service is resumed on Thursday mornings and on other days as well, if the weather is fine. So drop by and say hello, lots of people do.

And finally a big thank you to our committee and all the members that vote us the funds to maintain the wonderful Sunken Gardens for all to enjoy.

**Roger Allen**  
Just one of the volunteers

Our garden keeps us oldies out of trouble, unless we get involved with the new cocktail bar, so why don't you come along and say hello too, you might even get a Pina Colada.



# COFFEE ★ SALOON

## Canford Cliffs



# Exceptional Coffee Delicious Food

**Canford Cliffs**

9 Haven Road, BH13 7LE

**Wareham**

6 South Street, BH20 4LT

**Westbourne**

62 Seamoor Road, BH4 9AS



# Brownsea Open Air Theatre (BOAT) On Line

One of the biggest theatrical projects in the south, BOAT's traditional Shakespeare productions have been set on The National Trust's Brownsea Island in Poole Harbour ever since 1964 until COVID-19 intervened.

In 2020 and again in 2021 BOAT aimed to put on Romeo and Juliet nine times over three weeks, creating a quality show for up to 530 people each night. The experience of the trip to the island, the picnic in the grounds, the show itself and the boat back is something people return for again and again.

With the pandemic preventing productions in 2020 or 2021, the inventive minds of BOAT's creative people decided to develop ways of using the internet to bring Shakespeare to everyone.

'Shakespeare Shorts' is a series of extracts from Shakespeare's works, performed and presented in highly innovative ways. Choose from Hamlet, Richard III, Romeo and Juliet, The Tempest, Macbeth and Twelfth Night.

See [www.youtube.com/c/BrownseaOpenAirTheatre](https://www.youtube.com/c/BrownseaOpenAirTheatre)

'Stir up Shakespeare' is a hands on way to learn about Shakespeare. Make your own scene from Romeo and Juliet in a shoebox or make fake pies for a feast. These are just two of the many projects for young people to try using materials easy to find in the home.

See [www.brownsea-theatre.co.uk/stir-up-shakespeare](https://www.brownsea-theatre.co.uk/stir-up-shakespeare)

As restrictions lift BOAT is already looking forward to 2022 when we hope to be back on Brownsea Island. These beautiful surroundings make for a wonderful show, and a fantastic evening of traditional Shakespeare.

BOAT receives excellent national and regional coverage, and has been featured in The Guardian as one of the UK's Top 10 Open Air Theatre Venues, Debrett's 2009 list of the top five things to do in England and, in 2019, Woman's Weekly featured BOAT as one of the Top 5 Open Air Theatres in the UK.

It all began when in 1964 The Bournemouth Little Theatre Club

*'Stir up Shakespeare' is a hands on way to learn about Shakespeare. Make your own scene from Romeo and Juliet in a shoebox or make fake pies for a feast. These are just two of the many projects for young people to try using materials easy to find in the home.*



hit upon the idea of marking the 400th anniversary of William Shakespeare's birth with an open-air production on Brownsea Island, recently opened to the public by the National Trust.

A team made visits to the island, which was hugely overgrown, waist high in many places and chose the area in front of the farm as the site for the performance: the cowshed being the only source of electricity. To this day the cowshed plays a vital role, being a

store in the winter, a workshop in the spring, as the set is built, and as dressing rooms during the run.

As they had an island setting for their performances, the play chosen in 1964 had to be The Tempest. Three evenings in August were planned. Open air Shakespeare was a novelty then and attracted TV interest from both BBC and ITV. The three evenings sold out very quickly and a fourth evening proved necessary to cope with the demand.

Usually nine performances take place each year. BOAT is a registered charity, raising funds primarily for the National Trust and the Dorset Wildlife Trust. BOAT is professionally run, but all those involved with BOAT, whether onstage, backstage or front-of-house are unpaid volunteers.

Keep your eye on [www.brownsea-theatre.co.uk](https://www.brownsea-theatre.co.uk) for information about 2022.

**Steve Annandale & Brian Woolton**

# The Roots of Social Change

## Life in Britain and the Empire 1815 - 1939

This book is for release in late July/early August. Take a rollercoaster ride- told through stories, voices and events. Explore how life was transformed, why and for whom and the triggers of social change, seeking to improve life quality. Discover why tensions existed and dip into daily life at all levels of society.

What emerges is a sense of purpose, greater life opportunities and desire for a fairer Britain. The build up in the Victorian & Edwardian eras, and events post World War 1, shows how each decade informed the next. Overlaying all this was innovation, social mores, sense of liberation and hopes as Britain was propelled into the modern age- vibrant, exciting and dynamic, yet tinged with uncertainty.

This is a hardback limited edition book of about 400 pages, complete

with a dust jacket. Priced £21.99, my intention is to cover printing costs and for net proceeds to go to specified cancer care charities: Macmillan Caring Locally (MCL), Lewis Manning Hospice Care (LMHC) and Weldmar Hospicecare Trust (WHT).

Email me to reserve a copy, or phone if no email. Please state which charity you wish to support. The last date for advance orders is the end of May as this will influence the print run. Payment is due by 15th June, shortly before book printing. A buffer stock will be held on book release. Once gone- that's it! I have a pdf book flyer if you want to send to friends and contacts. My first book, The Forgotten Kingdom of Barotseland (2016), was well received by the Bodleian, British Library, Zambia and many others interested in our colonial past.



*"A masterpiece and rarity. The book has comprehensive scholarship, is beautifully written and is a joy to read."* Michael Howell, CMG, OBE, British High Commissioner Rtd.

### Stuart Sherring

Email: [stuart@ideascape.co.uk](mailto:stuart@ideascape.co.uk)  
Tel: 01202 759333

*Editor - Please find below an interesting extract about Thomas Lipton from Stuart's book. We wish Stuart all the best with the publication and nice to see that the sales will be supporting those two very worthwhile charities.*

## The Genius of Thomas Lipton

Behind the brand, flair and flamboyance, is the story of a rags-to-riches tycoon, self-publicist and philanthropist. In the 1840s, the family left Fermanagh hoping for a better life in Glasgow.

Thomas was born here in 1850. His father opened a small shop selling provisions and the young Thomas collected foodstuffs in a wheelbarrow from ships on arrival from Belfast.

Working as a cabin boy, he mixed with sailors who regaled him with tales of exotic places. America stood out: vibrant, exciting and a hive of business activity. At 17, he left New

York to work on a Virginia tobacco farm and then as a book-keeper in South Carolina. Back in New York he discovered a métier- and mentor, Alexander Turney Stewart, also of Irish/Scots descent. The marble-fronted emporium of A.T. Stewart & Co sold dry goods. Its trademark success was low mark up, high volume, quality- and pride in appearance. The young recruit was a quick learner.

On his 21st birthday Lipton opened a delicatessen in Glasgow- elegantly displaying rows of cheeses and hams in a brightly lit store where all sales assistants wore white aprons. A piper, he drew vast crowds,

a fanfare announcing arrival on opening each new store: Glasgow, Edinburgh, Dundee, Paisley and Leeds. He purchased high quality products direct from Fermanagh farmers before market, agreeing a fixed price and guaranteed prompt payment. This cut out the middle man at a stroke and was far better for farmers too. His mentor would have been proud.

In December 1881, a steamer docked in Glasgow. It carried the world's largest cheese, 2 feet thick and 14 feet round. It went on display in the window of his Jamaica Street store. Buried inside the cheese were 'gold sovereigns.'

A few days before Christmas, immaculate in a fine white suit, Lipton cut the cheese into neatly wrapped slices. In two hours it had all been sold. His marketing acumen was phenomenal.

Lipton controlled the supply chain. He purchased a meat packing plant in America, expanded into coffee and cocoa, bought fruit farms in Kent and meat stores, bakeries, curing stations and wine stores. In the early 1890s he acquired five tea plantations. Lipton's slogan said it all- "direct from the tea garden to the tea pot." His by now 300 shops couldn't satisfy demand for tea in packets at 1/7d a pound. Within a year he was selling it in pound, half pound and quarter pound packets. Customised blends were made "for the perfect tea to suit the water of your town."

"Lipton's" was a household name.



His shops made him a millionaire, and tea a multi-millionaire. In 1898 he floated the company and retired. A philanthropist, he never forgot his Glasgow roots. Lipton was not only a highly successful businessman but a good sport. A dream was winning

the America's Cup. He tried five times but it was not to be. Actor Will Rogers campaigned for a cup, presented to Thomas Lipton in a fitting tribute by the Mayor of New York- as the "world's most cheerful loser."



**BRANKSOME  
BEACH**

Poole's smartest  
seafront venue

Restaurant • Terrace Bar • Café

Pinecliffe Road, Branksome Chine, Poole 01202 767235

[www.branksomebeach.co.uk](http://www.branksomebeach.co.uk)



# BERKELEYS

PROPERTY AGENTS • CHARTERED SURVEYORS • EST 1991



Inspiring views  
local living



BERKELEYS ARE THE MOST TRUSTED AND EFFECTIVE SALES AND LETTINGS AGENT FOR PREMIUM PROPERTY IN CANFORD CLIFFS, SANDBANKS, BRANKSOME PARK, LOWER PARKSTONE AND LILLIPUT. SINCE 1991, WE HAVE SOLD AND LET OVER 2,000 LOCAL PROPERTIES VALUED FROM £300,000 TO £9.2M. WITH STRONG DEMAND FOR LOCAL PROPERTIES BERKELEYS ARE THE PREMIUM ESTATE AGENT FOR YOUR SALE OR LET.

@BerkeleysPoole  
/BerkeleysEstateAgents.CanfordCliffs

info@berkeleys.com  
lettings@berkeleys.com

BERKELEYS CANFORD CLIFFS  
1-3 Haven Road, Canford Cliffs, Poole, Dorset BH13 7LE  
Tel: 01202 708383

www.berkeleys.com



Residential Sales & Lettings  
01202 708383

CANFORD CLIFFS • SANDBANKS • BRANKSOME PARK • LOWER PARKSTONE • LILLIPUT



## The Fair Trader

AN INDEPENDENT NEWSAGENT IN WESTBOURNE ARCADE

We offer a reliable newspaper delivery service, 7 days a week. Delivering all major newspapers and magazines, as well as confectionery, greeting cards and all essential grocery.

**PREMIUM SERVICE WITH GUARANTEED EVERY MORNING DELIVERY**

To arrange your paper delivery service contact

**The Fair Tader Newsagents**  
12 Westbourne Arcade  
Poole Road, BH4 9AY

T: 01202 764813  
M: 07908 631650  
E: westbournethefairtrader@gmail.com  
Or speak to one of our staff members in store

## GAS TEC

HEATING & PLUMBING LTD

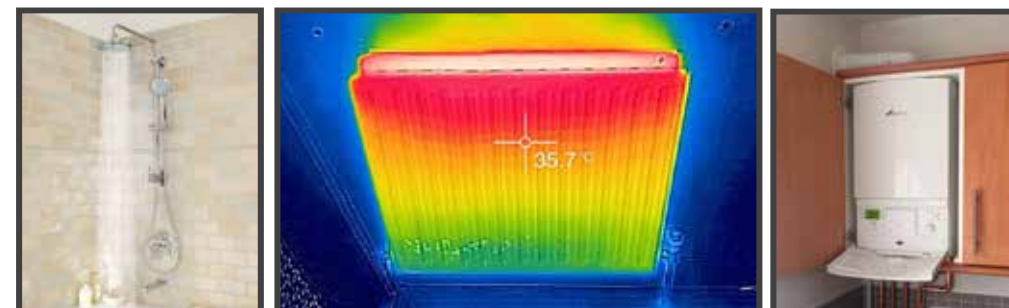
Awarded "5 stars" on the Poole Buy with Confidence Trading Standards scheme for workmanship, customer service and price.







OFFICE: 01202 980062 24HR: 07887 888459 WWW.GASTECLTD.COM



WE OFFER 10% OFF ALL WORK COMPLETED FOR "PINES & CHINES" READERS



# What have I learnt?

I am delighted and honoured to be asked to write for this issue of Pines and Chines, coinciding with (we all hope) a warm spring and the lifting of pandemic restrictions. I last contributed an article to introduce myself on arrival in autumn 2017. So, what have I learned since then and especially from the past twelve months?

I have learned a bit of local history! In 2019 we celebrated the 125th anniversary of our church's opening, originally an offshoot of All Saints' with which we continue to have an excellent rapport, only becoming a fully independent parish in 1930. I think from the outset ours was intended to be more available for the working classes who were then employed in the potteries, gas works and railway (or indeed domestic service in the bigger houses of Branksome Park.) The demography hereabouts these days is less clear-cut but still, I feel, St Aldhelm's retains an element of that tradition: politically and theologically we are a little more diverse than the average Church of England church.

Canon Stephen Lake, vicar here in the '90s and now Dean of Gloucester Cathedral, advised me on arrival that at St Aldhelm's 'they like to say their prayers and they like a good party.' The social life was taking quite a musical turn before Covid, with a varied calendar of concerts and lunchtime music recitals (the latter we hope to recommence from Tuesday 29th June, by the way.)

The centrality of prayer has been made clear to me during the past year. When at the start of lockdown the Archbishops of Canterbury and York admonished all clergy to avoid entering church buildings (something for which Justin Welby has been big enough to apologise recently) their instruction ran



counter to my own convinced view that in such a crisis, more than ever, the church should be seen and heard to be at prayer for the community and the country. So after consulting my church wardens and the Bishop I (respectfully) declined the order and entered church each day to celebrate Mass and to ring the Angelus as symbols of hope and encouragement sounding across the silent and anxious streets and flats of the parish. As soon as permitted we opened each day again for private prayer (and now find the number of people accessing it is greatly increased) and for public worship – also of course 'live streamed.' It is hard to measure 'prayer' but I and others sense that the atmosphere now is changed and deepened. After such a year, that would make sense, would it not?

Perhaps most of all I have learned to love God and to love people here more. It's the least I can do, considering how much he loves me

(and you) – and bearing in mind how lovely people here have been to me! Of course there are those who have a more negative view, but such are good for my soul so I try to listen, apologise where necessary, smile and look for the positive...

A recent artistic addition to the building has been a depiction of an 'Angel Ladder', inspired by 'Jacob's Dream' in Genesis and made by the artist Ruth Oaks. It conveys both fragility and yet a kind of spiritual strength. Whether or not you practise a faith I hope you will call by and look around St Aldhelm's sometime. It is an awesome place, and however you explain it there is an atmosphere of depth and peace and hope – and don't we all need some more of those right now?

May God bless each one of us following such a difficult and demanding year.

**Pip Martin**  
Email: Frphilipmartin@gmail.com

## STOP PARKING ABUSE!

**Common Issues That We Resolve:**

- Multiple Tenant Vehicles
- Parking outside of marked bays
- Unauthorised vehicles parking
- Visitor bay abuse
- Blocking Bin stores or access ways

**Services:**

- ✓ 24/7 Helpline
- ✓ Audited Warning Signage
- ✓ Daily Warden Patrols
- ✓ Permit Schemes
- ✓ IPC Compliant

**BOOK A FREE CAR PARK SURVEY**  
**01202 287191**

[www.countrywideparking.co.uk](http://www.countrywideparking.co.uk)

**100% FREE SERVICE**



"My 82 year old mother's quality of life has been greatly enhanced since Alice came into her life. Alice is very kind and patient and goes that "one step further" to make their time together special. Mum always has a smile on her face when she talks about Alice and looks forward to her visits and to be taken out. We as a family can't thank her enough."

MRS WW



**PERSONALISED  
COMPANIONSHIP AND ERRAND  
RUNNING SERVICE INSIDE AND  
OUTSIDE OF THE HOME**

**FAMILY STYLE SUPPORT  
TAILORED TO YOUR  
NEEDS**

WWW.HERE4YOUSORSET.CO.UK  
INFO@HERE4YOUSORSET.CO.UK  
TEL- 01202 001624



## Need a Trusted Handyman?



**K.C. Home  
Maintenance**

**07766 740060**

*It is important to only allow trusted & reliable persons into your home.*

I am Enhanced DBS checked and fully insured. I also provide a free no obligation survey followed up by a written estimate, so there are no hidden surprises.

[kchomemaintenance.weebly.com](http://kchomemaintenance.weebly.com)

## Topical legal issues arising during the Coronavirus pandemic

Andrew Carswell is a partner specialising in Civil Litigation at Trethowans. With a little hesitation, I thought I would in this edition, provide a bit of a round up of some legal issues arising from the Covid-19 pandemic, in the hope that residents can still bear more information or discussion about the subject.



give rise to disgruntled beneficiaries.

In the context of property, the Coronavirus Act 2020 gave, from last Spring protection to tenants of commercial and residential property, which broadly speaking prevented landlords from exercising their rights to evict tenants for non-payment of rent and other similar breaches.

Landlords of commercial property could not bring court proceedings or re-enter premises by changing the locks, or send a bailiff to remove goods to cover rent. That still continues, although is set to change at the end of March 2021. Landlords of commercial property who have unpaid rent will be looking forward to being in a position to enforce their rights. Tenants in arrears with payment of their rent will now have to make satisfactory proposals to avoid serious difficulties.

Landlords of residential property have fared slightly differently.

Initially the rules prevented the commencement of court proceedings for recovery of property, halted ongoing proceedings and suspended pending evictions. Landlords were able to serve notices, but these were extended. The law then changed in August and September 2020. The moratorium on court proceedings was generally lifted, but periods for service of pre-action notices were generally increased. In particular, the notice required to terminate an assured shorthold tenancy was extended from two to six months.

On a different note, the making of Wills over the past 12 months has of course presented a serious challenge. It is early days in terms of establishing whether home made Wills have increased, but I suspect this will have happened. It remains to be seen whether there has been compliance with due execution, or the circumstances

The Government has now stepped in and has amended the Will Act 1837, which allows remote execution of Wills. Traditionally, a testator/testatrix needed to sign or acknowledge his/her Will in the presence of two witnesses. That can now be achieved by video conference or other visual transmission. The Law Society has provided guidance on how this should be undertaken, which as you can imagine presents some interesting challenges for all concerned. It should be noted, however, that the Government advises that the use of video technology should remain a last resort and the physical witnessing of Wills should continue where possible. I think that has to be right and of course using a solicitor rather than preparing a home made Will must always be best practice.

Hopefully with vaccination and lifting of all types of restrictions, some of these problems will disappear over time, but we are still subject to them for a while yet.

Here's to a better and more prosperous 2021!

*"On a different note, the making of Wills over the past 12 months has of course presented a serious challenge. It is early days in terms of establishing whether home made Wills have increased, but I suspect this will have happened. It remains to be seen whether there has been compliance with due execution, or the circumstances give rise to disgruntled beneficiaries".*

How dull life would be without a smile.



I used to be indecisive. Now I'm not sure."

"Always borrow money from a pessimist. He won't expect it back."

"I don't have an attitude problem. You have a perception problem."

"Worrying works! More than 90 percent of the things I worry about never happen."

"The easiest time to add insult to injury is when you're signing somebody's cast."

"You don't need a parachute to go skydiving. You need a parachute to go skydiving twice."

"Going to church doesn't make you a Christian any more than standing in a garage makes you a car."

A lie gets halfway around the world before the truth has a chance to get its pants on.

"At every party there are two kinds of people: those who want to go home and those who don't. The trouble is, they are usually married to each other."

Never trust atoms. They make up everything.  
Local man killed by falling piano. It will be a low key funeral.

I was wondering, why does a frisbee appear larger the closer it gets? Then it hit me.

"Crime in multi-storey car parks. That is wrong on so many different levels."

**What do you call sad coffee?**  
Despresso.

Anton, do you think I'm a bad mother? My name is Paul.

A bear walks into a bar and says, "Give me a whiskey and ... cola."  
"Why the big pause?" asks the bartender. The bear shrugged. "I'm not sure; I was born with them."

A poodle and a collie are walking together when the poodle suddenly unloads on his friend. "My life is a mess," he says. "My owner is mean, my girlfriend ran away with a schnauzer, and I'm as jittery as a cat."

"Why don't you go see a psychiatrist?" suggests the collie.

"I can't," says the poodle. "I'm not allowed on the couch."

A guy spots a sign outside a house that reads "Talking Dog for Sale." Intrigued, he walks in.

"So what have you done with your life?" he asks the dog.

"I've led a very full life," says the dog. "I lived in the Alps rescuing avalanche victims."

Then I served my country in Iraq. And now I spend my days reading to the residents of a retirement home."

The guy is flabbergasted. He asks the dog's owner, "Why on earth would you want to get rid of an incredible dog like that?"

The owner says, "Because he's a liar! He never did any of that!"

# The Place to Book your *Holiday* Fred. Olsen Travel Agents



OPEN FOR CALLS & EMAILS

Your Local  
INDEPENDENT  
Travel  
Agents

MONDAY TO FRIDAY 10PM - 4PM



Plus...

**FREE PRIVATE TAXI TRANSFERS AVAILABLE\***

WHEN YOU BOOK A CRUISE FROM SOUTHAMPTON



Choose our specialist staff  
to book your next *holiday*...

\*Terms & Conditions Apply



Gareth



Charlotte



Ray



Helen



Beth

**Fred. Olsen Travel Agents** [fredolsentravelagents.co.uk](http://fredolsentravelagents.co.uk)

116 Poole Road **Westbourne** BH4 9EF

[westbourne@fredolsentravel.co.uk](mailto:westbourne@fredolsentravel.co.uk)

01202 023931

Find us on



## Westbourne DIY & Hardware

Established 1976



Your local store situated in the wonderful Westbourne Arcade

We have an incredible stock and extensive knowledge of all things DIY and hardware.  
Open every day 8am through to 4pm except Wednesdays and Sundays

15 Westbourne Arcade. BH4 9AY. 01202 764295  
Facebook: Westbourne DIY and Hardware

## ELECTRICIAN

[www.tmvelectrical.co.uk](http://www.tmvelectrical.co.uk)

**Do you find it difficult to get someone to come and do a small job?**

Expert in small electrical jobs & fast fault finding  
Also larger jobs & complex high  
specification installations  
6 year guarantee on all labour  
Fully qualified • Fully insured • CRB checked

Power, Lighting, Fuseboards • Phone & TV points  
Extra sockets, lights & switches  
Electrical Inspection & Testing  
LED Lighting • Lighting Design  
Audio Visual Installations • Data points

Small friendly family business  
30 years experience

Dorset Trading Standards Approved  
Totally reliable & reasonably priced

**Call Terry Vaine on: 07973 661043 or 01202 834303**



## Long Close

**A Private Residence  
For Gracious Retirement**



At Long Close we specialise in encouraging our residents to remain as active as possible retaining their dignity & independence in a democratic society, with complete care & back up assistance.

All enquiries welcomed with open invitation to view.  
The Proprietor and Manager are always available to discuss your needs.

# 01202 765090

23 Forest Road, Branksome Park, Poole, Dorset BH13 6DQ  
Email: [enquiries@longclosecare.co.uk](mailto:enquiries@longclosecare.co.uk)

## Roads covered by the Association

Branksome Towers	Elmstead Road	Pine Drive
Brudenell Ave	Ettrick Road	Pinewood Road
Brudenell Road	Flaghead Road	Ravine Road
Buccleuch Road	Forest Road	Sandbourne Road
Burton Road	Frankland Cres	Spencer Road
Bury Road	Haig Avenue	Spur Hill Ave
Canford Cliffs Ave	Haven Road	St Aldhelms Close
Canford Cliffs Road (Even Nos)	Lakeside Road	St Aldhelms Road
Canford Cliffs Road (Odd Nos. 3-67)	Lawrence Drive	St Clair Road
Canford Cliffs Road (Odd Nos. 69-99)	Leicester Rd	The Avenue
Canford Cres	Lindsay Road	Tower Road
Cassel Ave	Links Road	Tower Road West
Chaddesley Glen	Links View Avenue	Ventry Close
Chaddesley Wood Road	ImbreCourt	Western Avenue
Chaucer Road	Macandrew Road	Western Road ((Alumhurst Road end to No. 27))*
Chester Rd	Martello Park	Western Road ((Canford Cliffs end to No. 23))*
Chesterfield Close	Martello Road	Westminster Road
Cliff Drive	Martello Road South	Westminster Road East
Clifton Road	Maxwell Road	Widdicombe Ave
Compton Avenue	Moorfields Road	Wilderton Road
Compton Drive	Mornish Road	Wilderton Road West
Compton Gardens	Motcombe Road	
Dalkeith Road	Nairn Road	
De Mauley Road	Newton Road	
Dover Road/Close	Oratory Gardens	<i>*presently not covered by Warden</i>
Eaton Road	Ormonde Road	
Elgin Road	Overlinks Drive	

## Councillors

### Canford Cliffs Ward (which includes Branksome Park).

May Haines	c/o Civic Centre, Poole BH15 2RU Email: may.haines@bcpcouncil.gov.uk
Mohan Iyengar	c/o Civic Centre, Poole BH15 2RU Tel: 07887 684 174 Email: mohan.iyengar@bcpcouncil.gov.uk

### Penn Hill Ward.

Councillor Bryan Dion	c/o Civic Centre, Poole BH15 2RU Email: Bryan.Dion@bcpcouncil.gov.uk
Councillor Tony O'Neill	c/o Civic Centre, Poole BH15 2RU Tel: 07774 698 327 Email: Tony.O'Neill@bcpcouncil.gov.uk

### MEMBER OF PARLIAMENT

Sir Robert Symms	Local surgery contact 38 Sandbanks Road, Poole Tel: 01202 718078 Email: symsr@parliament.uk House of Commons, London, SW1 0AA
------------------	-------------------------------------------------------------------------------------------------------------------------------------

### Police and Crime Commissioner for Dorset

David Sidwick	www.dorset.pcc.police.uk
---------------	--------------------------

Clear.  
Approachable.  
And as individual  
as you are.

We know that tackling life's most complex problems takes more than just legal expertise. It is about listening, understanding and communicating.



TRETHOWANS

Law. As it should be.

0800 2800 421

www.trethowans.com

Bournemouth Poole Salisbury Southampton Winchester





PINES AND CHINES

[www.pinesandchines.co.uk](http://www.pinesandchines.co.uk)